

# SALES MANUAL

ÖTZ  
TAL

SÖLDEN

GURGL

Ötztal.  
*Tirol at its Best.*





### ÖTZTAL IS ALWAYS THE RIGHT CHOICE

„Tirol at its Best“: Our brand claim is a fairly self-confident promise. Ötztal shows what a contemporary vacation in the Alps should look like. It combines year-round and top-class tourist offers plus authentic nature exploration from the valley floor up to the glacier areas in a single, unbeatable package - for all ages and preferences.

Our internationally renowned ski resorts symbolize the highest level of winter sports. First and foremost the World Cup venue of Sölden with its record-beating mountain lifts, about 145 immaculate slope kilometers and legendary après-ski locations. In Upper Ötztal, Obergurgl-Hochgurgl enchants guests with pleasant ski runs and an exclusive flair, while four smaller ski areas are tailor-made for families. The ultimate Ötztal Super Skipass for some 350 km of pistes within the valley guarantees full flexibility. Those in search of even more variety will find ideal conditions for cross-country skiing, ski touring, ice climbing, tobogganing and snowshoe hiking.

In summer, Ötztal is considered a true heaven for hikers and mountaineers. The variety of tours ranges from leisurely family walks to climbing the 3774 meter high Wildspitze peak. Innovative concepts such as the Almzeit Theme Trail promise nature exploration with added value while the mountain lifts open up attractive destinations right from the village center. For example, the world's exclusive „007 ELEMENTS“ James Bond world of experience nestles high above Sölden inside a 3000-meter peak.

Road cyclists, mountain bikers, e-bikers and families indulge in their passion for excellently developed trail networks. The BIKE REPUBLIC SÖLDEN, Europe's most extraordinary bike park, was created for all those in search of flow. Pure thrills await you in Austria's largest outdoor theme park - AREA 47 incl. varied sports from blobbing to wakeboarding. Be it rafting action, canyoning, climbing and paragliding or relaxing in Tirol's first spa, the AQUA DOME in Längenfeld: Discover all these highlights and much more on your own. For yourself and enthusiastic customers who prefer a sustainable offer.

Mag. Oliver Schwarz  
Managing Director of Ötztal Tourismus

## Contents

3	Ötztal Incoming   Beds & Businesses
4 – 5	Location, Getting There, Distances
6 – 7	007 ELEMENTS
8	AQUA DOME
9	Ötztal Nature Park

Winter in Ötztal	
11	Ötztal Super Skipass
12 – 13	Oetz Region
14	Umhausen-Niederthai
15	Längenfeld
16 – 19	Sölden
20 – 21	Vent
22 – 25	Gurgl
26	Off the Beaten Slopes

Summer in Ötztal	
28	Ötztal Premium Card & Ötztal Card
29	Ötztal Cycle Trail   Climbing in Ötztal
30	Ötztal Trek   Ötztal Urweg
31	AREA 47
32 – 33	Oetz Region
34 – 35	Umhausen-Niederthai
36	Längenfeld
37 – 38	Sölden
39	Vent
40 – 41	Gurgl
42 – 43	MICE
44 – 45	Events
46 – 47	Overview Maps

**Imprint:** Responsible for the contents: Ötztal Tourismus.  
Concept & Design: Ötztal Tourismus. Subject to changes.  
Cover Image: © Jana Rogers; Picture Credits: © Ötztal Tourismus – G. Berger, M. Burtscher, M. Klotz, D. Ebenbichler, R. Whyllidal, I. Nösig, L. Ennemoser, C. Schöch, F. Wagner, A. Brey, B. Ritschel, M. Gartner, K. Andorfer, D. Zangerl, B. Steiner, E. Holzknecht, W. Watzke, A. Lohmann, J. Skarwan, S. Fiegl; © Bergbahnen Sölden – C. Nösig, K. Grunert, R. Whyllidal, M. Geisler; © Bergbahnen Obergurgl-Hochgurgl – A. Lohmann; © AQUA DOME; © Naturpark Haus; © Bergbahnen Hochoetz – eyes – D. Zangerl; © Doppelmayr; © AREA 47 – E. Benrei, J. Klatt; © VIVEA Gesundheitszentrum Umhausen; © Ötztaler Greifvogelpark – Hanspeter Leiter; © Superwien; © MAKe deSIGn; © Das Central; © Bergland



## Ötztal Incoming

ÖTZTAL INCOMING (DMC) places the ÖTZTAL on the market - Tirol's longest side valley and home to countless Alpine adventure highlights. As a regional incoming partner we not only know all the attractions but we can also provide you with real Ötztal insider tips - in summer and winter alike.

### ONE-STOP FULL SERVICE PACKAGES

We create and design individual, top-quality offers for group, incentive or package tours by offering competent advice when it comes to planning such a trip. Our Full Service Package includes the purchase of services, hotel reservations, planning and organizing details of entire travel programs as well as the handling of arrivals from the destination airport (INN, MUC, ZRH, SZG).

Of course, we take over both quality control and settlement with suppliers. Working with us you choose a local and expert partner, the highest quality standards, an excellent price-performance ratio and the very best service. On request, we also take care of Fam Trips in order to bring you closer to the huge variety of Ötztal.

At [www.oetztal.com/press](http://www.oetztal.com/press) you will find our current press photos, texts and video material. For further press material contact us by e-mail at [presse@oetztal.com](mailto:presse@oetztal.com). Please note our rights of use and license terms.

### CONTACT

Ötztal Tourismus Incoming GmbH  
Gemeindestraße 4 | 6450 Sölden | Österreich  
T +43 (0) 57200 256 | F + 43 (0) 57200 275  
[incoming@oetztal.com](mailto:incoming@oetztal.com) | [www.incoming.oetztal.com](http://www.incoming.oetztal.com)

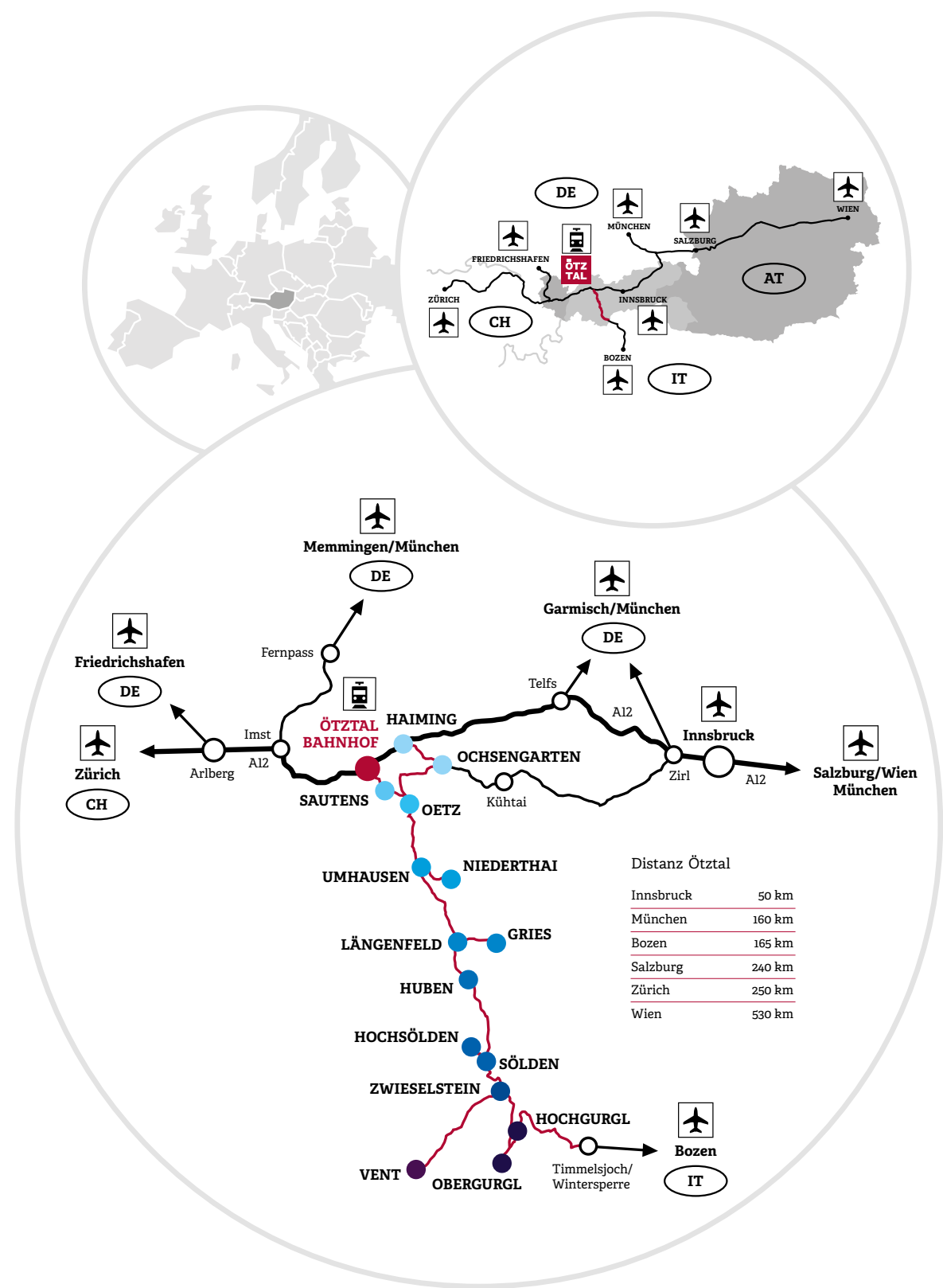


## Businesses & Beds

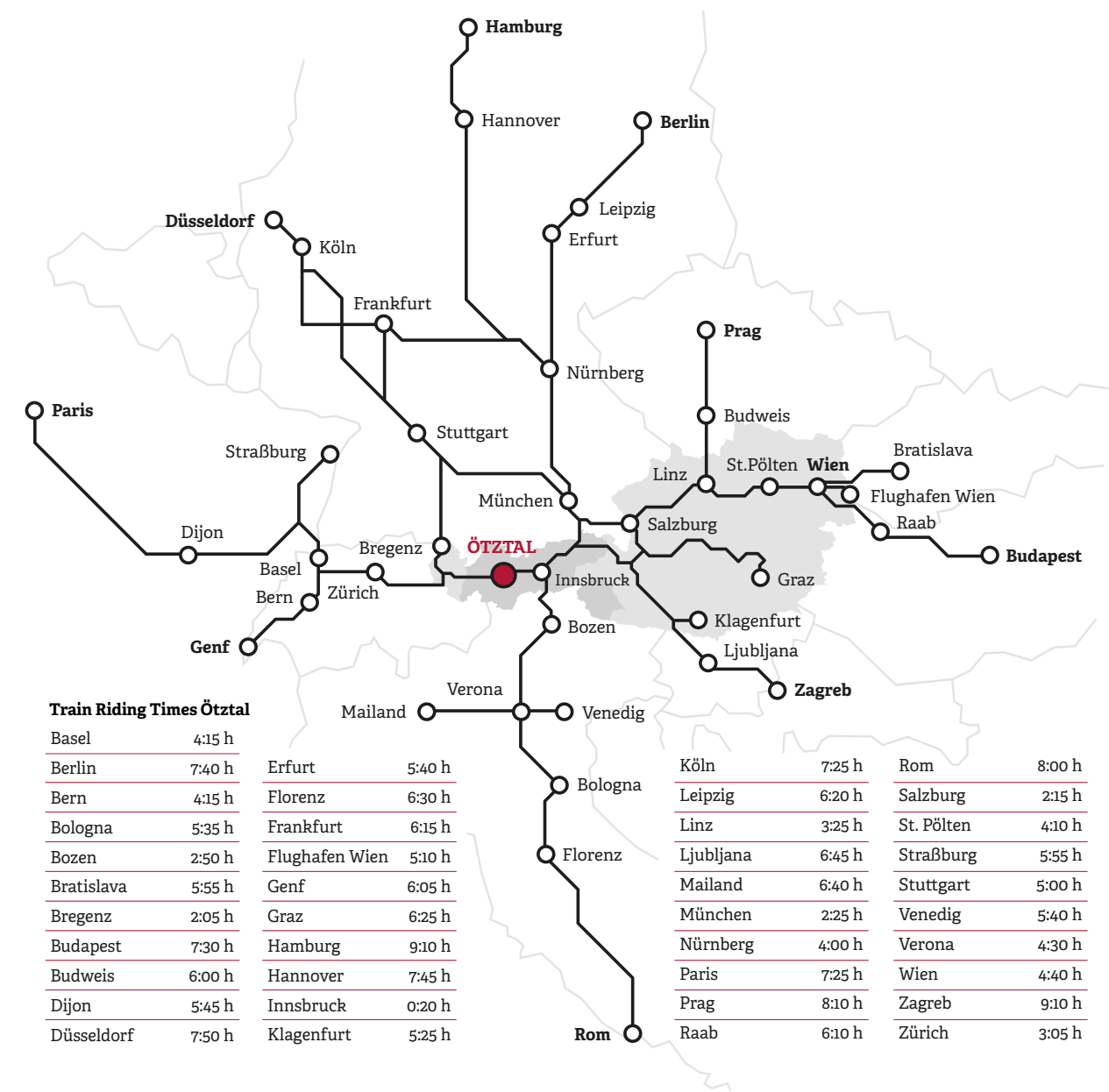
Category	Businesses	Beds
5 Star	5	827
4 Star Superior	18	2.715
4 Star	48	3.878
3 Star	122	5.010
2 – 1 Star	130	2.616
Apartments, commercial	177	4.253
Private accommodations	206	1.713
Apartments, Chalets, private	801	6.134
Refuge huts	9	615
Campsites	5	1.840
Other lodgings	12	338
Total	1.533	29.939



# Location & Distances



# Getting Here by Train



# ELEMENTS

007

A JAMES BOND CINEMATIC INSTALLATION



007 ELEMENTS is a new James Bond cinematic installation built inside the summit of the Gaislachkogel Mountain in Sölden. The name „007 ELEMENTS“ reflects the visitor journey through a series of galleries, each distilling the craft of the signature elements that define a James Bond film. The installation focusses on Spectre, which was shot in Sölden and also features other titles in the long-running Bond film franchise comprising 24 movies. The collaboration between the project's Creative Director Neal Callow (Art Director on Casino Royale, Quantum of Solace, Skyfall and Spectre), Architect Johann Obermoser and Optimist Inc. Head of Design Tino Schaedler has resulted in an immersive, interactive, and educational experience that places visitors inside the world of 007 while revealing how that world is made.

*„The aim of 007 ELEMENTS is to provide a deep insight and to tell the story of the making of 007 films through an ultra-modern, emotive and engaging experience while using the incredible location to place guests straight in Bond's environment and bring the stories to life in a unique and unforgettable way,“ Callow explains.*

007 ELEMENTS is housed inside a beautiful, bespoke building designed and constructed by Obermoser arch-omo zt gmbh inside the summit of the Gaislachkogel Mountain in Sölden,

which stands at 3000 meters above sea level. The 1300 m<sup>2</sup> building is arranged over two levels and blends seamlessly with the inspiring beauty of its natural surroundings. The building is right next to the ice Q restaurant, the location for the Hoffer Klinik in Spectre. Here James Bond meets Dr. Madeleine Swann for the first time and the snow chase sequence begins in the film. The entrance is through a tunnel that immediately immerses the visitor in the sights and sounds of James Bond's world. Two of the main exhibition halls offer spectacular views of Tirol's mountains and valleys. Combining state-of-the-art technology with stark contemporary architecture, 007 ELEMENTS is a captivating experience, linking a dramatic cinematic soundscape with interactive technology and visuals, all framed by awe-inspiring natural surroundings and a superb musical scenery.

Please note that the two uphill rides on Gaislachkogel Mountain Gondolas from the valley floor to the top station take approx. 30 minutes. You must plan the uphill ride to the top station early enough, so that you reach the entrance at the booked access time (time slot). With a valid admission ticket access is possible within the booked time slot. The predefined time slots specify only the time of the first entry; the admission to 007 ELEMENTS is possible within the booked time slot. Afterwards you can stay at the 007 ELEMENTS exhibition as long as you want. Last entry at 3:30 pm.

## BARREL OF THE GUN

Visitors enter 007 ELEMENTS via the Barrel of the Gun, an atmospheric anteroom. This space focuses on two fundamentals that are synonymous with the James Bond films, innovative title sequences and dramatic, spine-tingling music.

## PLAZA

In the open-air Plaza, the imposing angles of the building's architecture frame the picture-book mountain panorama. The sharp angles recall the work of famed Bond Production Designer Sir Ken Adam who was the primary influence on the building's design.

## LOBBY

The Lobby echoes the type of antechamber that Bond often enters upon his arrival at a villain's lair. It features an exclusive film that is narrated by Skyfall and Spectre Director Sam Mendes, which takes the visitor through the history of the James Bond films - from Dr. No to Spectre. Mendes also describes his own personal connection to the series.

## LAIR

This room features an innovative piece of immersive digital theater designed to showcase the characters and typical dialogues taken from the Bond films in a fresh and exciting way.

## BRIEFING ROOM

Actress Naomie Harris, who plays Moneypenny, narrates an exclusive film that explains how the series' scriptwriting has led to location choices, and how these locations have - in turn - inspired some of the series' most iconic studio sets. Special attention is given to the filming locations that form the main story-scape for Spectre's Austrian action sequence.

## VALLEY PASSAGE

This spectacular glass viewing space looks north over the Glacier Road, a magnificent filming location that was used in Spectre.

## TECH LAB

The Tech Lab explores some of the cutting-edge technologies that feature in the Bond films. This state-of-the-art space allows visitors to interact with the technology and to explore some of the legacy props and digital creativity used in a James Bond production.

## ACTION HALL

This is an installation that centers on the work of the special effects and stunt departments. It features the front portion of the aircraft that Bond pilots in Spectre. Visitors will also get a behind-the-scenes look at the exact make-up of Spectre's outstandingly thrilling mountain chase sequence.

## SCREENING ROOM

In the Screening Room guests can watch the Austrian action sequence from Spectre with a fresh understanding of how it was created.

## LEGACY GALLERY

The Legacy Gallery allows visitors to discover an extensive 007 archive through interactive touch screens that dip into EON Productions' archive vault. Exclusive 007 merchandise is also available for purchase.



Barrel of the Gun



Lobby



Lair



Briefing Room



Valley Passage



Tech Lab



Action Hall



Screening Room



Plaza

## OFFICIAL PARTNER



UNIFORM  
SUPPLIER



OFFICIAL  
SPONSOR



COOPERATIONS







## AQUA DOME – Tirol Therme Längenfeld

Floating weightlessly in the saltwater pool, marveling at the fabulous peaks higher than three thousand meters: a wellness dream comes true on over 50,000 square meters at the AQUA DOME - Tirol Therme Längenfeld. The most modern and eye-catching spa resort of the Alps, nestling at the heart of Ötztal, enchants visitors with a futuristic water and sauna world, SPA & fitness and a separate children's world.

A heated corridor designed according to the four elements, takes guests wearing bathrobes from the comfortable 4\* Superior Hotel directly to the thermal spa area.

The summit of Alpine Wellness is waiting at the spacious SPA 3000, the premium spa area reserved exclusively for hotel guests. Even more regional well-being highlights can be found at the Morgentau Beauty & SPA where signature treatments are scheduled, for example an Ötztal Stone Massage.

- Open all year
- 200 rooms and suites
- 20,000 m² wellness area
- 12 indoor and outdoor pools, countless saunas and steam baths
- 4 restaurants and bars

### CONTACT

AQUA DOME – Tirol Therme Längenfeld  
Oberlängenfeld 140 | 6444 Längenfeld  
T +43 (0) 5253 6400  
office@aquadome.at | aqua-dome.at  
N 47.068829° E 10.965212°



## Ötztal Nature Park

The Ötztal Nature Park comprises all environmentally protected areas in Ötztal Valley. The protected area stretches from the valley floor up to high Alpine glacier regions. Its highest point is Ötztal's Wildspitze peak at 3774 m above sea level. The mountain villages of Vent (cradle of the Alpine Club) and Obergurgl (Tirol's highest parish village), as well as Niederthai/Umhausen and Gries/Längenfeld are located right at the heart of the Ötztal Nature Park – making a perfect base for mountain exploration.

The Ötztal Nature Park comprises a number of almost untouched, protected mountain areas in the Ötztal Alps and Stubai Alps, characterized by fascinating high Alpine landscapes and huge glacier regions. The unspoiled forest area in Sölden's Windachtal features century-old stone pine populations. The precipitous Engelswand rock face near Umhausen, an official Tirolean and European Natura 2000 Preserve, offers an insight into the varied flora and fauna in an almost vertical habitat. Another protected area can be found at the entrance to the Ötztal: the splendid Achstürze-Piburger See region boasts an idyllic mountain lake amidst a huge prehistoric rockslide area. The 5 main aims of the Ötztal Nature Park are: conservation of nature and landscape, promotion of recreational values, education, research and regional development.

**NEW!**

### NATURE PARK HOUSE WITH MULTIMEDIA EXHIBITION

The brand-new Nature Park House in Längenfeld is home to a unique multimedia exhibition on Ötztal's nature and culture, covering a total area of 300 m². Special Ötztal plants, animals and habitats are explained as well as typical Ötztal stones and the rockslides which formed the valley in prehistoric times. The multilingual (de + en) exhibition contains state-of-the-art elements that appeal to all senses. Additionally, a multi-functional seminar room is available on 70 m². It hosts expert lectures and temporary exhibitions. Visit us at the new Nature Park House in Längenfeld - you will be surprised!

### OPENING TIMES

Daily 10:00 am – 6:00 pm  
(June – September, December – April)

### FACTS

- Protected area since 19 Sep 2006
- Size: 508 km²
- Tirol's second largest Nature Park
- Austria's third largest Nature Park
- 91 km² of glacier-covered terrain
- 67 glaciers
- 1600 km of high Alpine hiking trails
- 6 theme walking routes
- 152 mountains higher than 3000 meters
- 48 mountain huts and pasture inns
- Tirol's biggest waterfall

### UNIQUE FEATURES

- 18% of glacier-covered area
- Natural history research center
- High Alpine archaeology

### CONTACT

Naturpark Ötztal | Naturpark Haus  
Oberlängenfeld 142 | 6444 Längenfeld  
T +43 5253 2020 1  
info@naturpark-oetztal.at  
www.naturpark-oetztal.at



# Winter in Ötztal

In Ötztal winter reigns over the valley in a truly impressive landscape from October through May: more than 250 peaks higher than three thousand meters encircle the top ski areas of Sölden, Gurgl and Hochoetz. The high altitude and the technical development of two glacier mountains up to 3340 meters promise absolute snow reliability. Also off the beaten slopes Ötztal has a lot to offer - ski touring, cross-country skiing, snowshoe hiking or simply relaxing.

Convenient public transport connections ensure that your Ötztal holiday starts and ends in a stress-free way, for example at the separate Inntal autobahn exit, the train station at the valley's entrance or Innsbruck airport which is a one-hour drive away. For maximum holiday enjoyment guests can comfortably reach their hotel with the Ötztal Shuttle.



📍 Suspension Bridge, Längenfeld



## Ötztal Super Skipass

### ONE PASS FOR ALL ÖTZTAL SKI AREAS

Ski vacationers can choose from the entire slope menu of Ötztal as the Super Skipass bundles all ski slopes in the valley: the Alps' most popular winter sports destinations as well as the small but fine ski areas. At the „Hot Spot in the Alps“ in Sölden, the Giggijoch and Gaislachkogel gondolas take skiers quickly from the village straight to almost endless ski slopes. Powder skiing and freeriding, on the other hand, are best done in Gurgl. The high Alpine location, absolute snow reliability and state-of-the-art mountain lifts add to great „Top Quality Skiing“ on the wide open slopes of Upper Ötztal. There is even more: the Super Skipass also includes the family-friendly Hochoetz-Kühtai ski region at the entrance to Ötztal and the smaller ski areas of Niederthai, Gries and Vent. The ski ticket promises not only a flexible and individual holiday in Ötztal but also endless winter exploration in all its facets.

### ENTERTAINMENT INCLUDED

Not only passionate sportspeople can take advantage of superb offers, also the entertainment program is always worth a visit: the latest highlight is the „007 ELEMENTS“ James Bond Cinematic Installation inside the peak of Sölden's Gaislachkogel. The BIG3 Rally or Europe's highest Motorcycle Museum at the Top Mountain Crosspoint in Hochgurgl, numerous musical and sports events such as the Alpine Ski World Cup Opening guarantee a truly varied stay.

- Absolute snow reliability from autumn to late spring
- 6 ski areas
- 90 mountain lifts
- 361 slope kilometers
- 2 glacier ski areas

Available in all Ötztal ski areas if you purchase a 3-day skipass in the period between 14.11.2019 and 26.04.2020.

👉 [oetztal.com/super-skipass](https://oetztal.com/super-skipass)







# Hochoetz – Kühtai Ski Region

## DOUBLE THE FUN! 1 SKIPASS – 2 SKI AREAS

There are double the slopes and double the variety when buying a day skipass for Hochoetz or Kühtai. With just one ticket you can enjoy two ski areas and thus double the offer is waiting for you in the Hochoetz-Kühtai ski region. Free shuttle buses run every half hour between Hochoetz (Ochsengarten) and Kühtai.

## ACCESS TO SKIING FUN IS CHILD'S PLAY

In addition to the gently rolling slopes and the clearly arranged terrain, young and older ski heroes are surprised by many special highlights. Right at the top station of Acherkogel mountain gondola in Hochoetz, WIDI's Kids' Land gives you a warm welcome. The youngest snow fans, taken care of by the region's ski school experts, make their first steps in the snow playfully on a magic carpet in a separate child area. Afterwards, five modern practice ski lifts are just perfect to improve skiing skills on real ski slopes.

## WINTER ADVENTURE FOR ALL THE FAMILY

Life-sized wild animals with information boards displaying interesting facts and figures, make the special charm of the Hochoetz children's course - a child-friendly adventure route off the slopes. Unique in Austria's ski resorts, WIDI's MOVIE SHUTTLE offers a fascinating journey for all senses. Ten seats are available for the fast-paced 5D adventure in the movie theater with 180-degree screen. In the kindergarten for snow fans from 2 years (open all day) and the children's restaurant the little ones are looked after with great attention and the highest quality of services. Future freestyle artists will feel at home in WIDI'S FUN PARK while the WIDI Rally and the children's theater offer even more family attractions.

## FOR NIGHT OWLS AND ROMANTICS

Pleasant floodlights illuminate the ski slope of Ochsengarten/Hochoetz every Tuesday from 8:00 pm to 10:00 pm. In Kühtai night skiing is celebrated on Wednesdays and Saturdays from 7:30 pm to 10:00 pm. Romantics should try a very special overnight accommodation at the Snow Village in Hochoetz beyond 2000 meters altitude. Take a refreshment stop at the Hochoetz panorama restaurant or other cozy mountain huts. Equipped with top rental equipment plus tailor-made ski course programs of the local snow sports schools, a perfect day on the ski slopes is almost guaranteed.

## FACTS

- Mountain gondola lifts
- 11 chairlifts
- 11 T-bar lifts
- 85 slope kilometers (easy 21 km, intermediate 48 km, difficult 10 km, ski routes 3 km, freestyle 3 km)
- Free bus transfer every 30 min between Hochoetz (Ochsengarten) and Kühtai

oetz.com



## CONTACT

Schiregion Hochoetz  
Erschließungs-GmbH & CoKG  
Angerweg 13 | 6433 Oetz | Austria  
T +43 (0) 5252 6385  
info@hochoetz.at  
www.hochoetz.at  
N 47°11'59.5" E 10°54'11.4"







## Niederthai Card



Be it Alpine skiing or cross-country skiing, tobogganing or winter walking - holders of the Niederthai Card enjoy everything the region has to offer with just one ticket. You can choose from more than 30 km of Nordic trails with ideal conditions for sporty challenges. Some 50 kilometers of winter walking trails invite you to explore nature on a scenic hike.

### SERVICES

The whole fascination of winter sports and exercise in the snow: use of ski lifts and cross-country ski trails already included if you stay at one of the Niederthai Card Partner lodgings! Your personal Niederthai Card allows you to use the following services for free.

- Niederthai ski area
- Cross-country skiing on the sunny plateau
- Cross-country ski taster course (1x per card)
- Cross-country biathlon for everyone (1x per card)
- Toboggan runs
- Snow playground
- Stuiben Falls lantern walk
- Public ski and cross-country ski bus
- Guided tour of Niederthai's old village smithy
- Guided (snowshoe) winter hike

*\*Please note that some services may not be offered throughout the season due to weather and snow conditions.*

## Nice for cross-country skiers

High altitude, snow guarantee and a truly varied trail offer which is also free of charge. The sunny Alpine plateau of Niederthai carries the „Ötztal cross-country ski center“ quality seal rightly. But that's still not everything: amateur athletes can practice their shooting accuracy at the taster biathlon. Those who can't get enough enjoy their evening exercise on the illuminated track from Monday to Friday on the Frühloipe early morning track and Tellerboden night track from 5:00 pm to 9:00 pm. In Umhausen, the Ötzi Village loop track is floodlit every Monday, Wednesday and Friday from 6:00 pm to 10:00 pm.

In terms of popularity among Nordic sports fans, Niederthai is considered a class of its own. The lovely mountain village has received the coveted Tirolean Nordic Trail Quality Seal - top-class tracks are guaranteed. A total of 31 cross-country skiing kilometers and routes are available for fans of the Nordic disciplines. Be it in classic style or as a skater, the right track can be found for all ages, abilities and preferences. A nature experience of a very special kind is waiting for you on the track into Horlachtal on 3.3 kilometers - in addition to sporting activity it offers great spots to pause and take a rest. The Sonnenplateau track on 3 kilometers is recommended as a pleasant introductory round.



## Cross-country skiing in Längenfeld

When it comes to winter sports the village on the „long field“ especially attracts cross-country skiers. At 1180 meters above sea level, friends of Nordic sports await a true paradise offering some 40 kilometers of free and well-groomed tracks (Tirolean Nordic Trail Quality Seal!).

Especially the wide open valley basin is made to measure for endless loops on immaculate tracks. The use of all Nordic skiing trails in Ötztal is free for our guests. Discover your favorite route in Längenfeld-Gries. For those who want to enjoy cross-country skiing by night there is a 3 km long night track in Oberried, which is floodlit daily from 5:00 pm to 9:00 pm.

### PARKING AREAS

- Längenfeld Nordic tracks: Längenfeld sports field
- Huben: northern entrance to the village
- Winklen: Au/Winklen car park
- Gries: car park at the edge of the village



## SÖLDEN. HOT SPOT IN THE ALPS.

### GLACIER SKIING AND WINTER SKI AREA SÖLDEN 1350 – 3340 M

Rettenbach and Tiefenbach glaciers rank among the largest glacier mountains in Austria developed for winter sports enthusiasts. The glacier ski area can be easily reached by car or bus on the highest panorama road of the Eastern Alps (15 km from Sölden). In addition to a 1.7 km long road tunnel, the two glacier ski areas are also linked by a ski run, another unique features in the Alpine Region. A ski tunnel at 3240 meters altitude will take you from Rettenbach to Tiefenbach glacier.

Sölden's ski area promises maximum variety during your skiing holiday in Tirol. More than enough snow for memorable skiing is guaranteed from October to May. Also the yearly held FIS Alpine Ski World Cup Opening traditionally takes place at Rettenbach glacier offering prime slope conditions already in early autumn. Among the 31 modern lifts are also the 2 most powerful feeder mountain lifts world-wide. They whisk winter sports aficionados from the village center up to 3000 meters quickly and without waiting times.

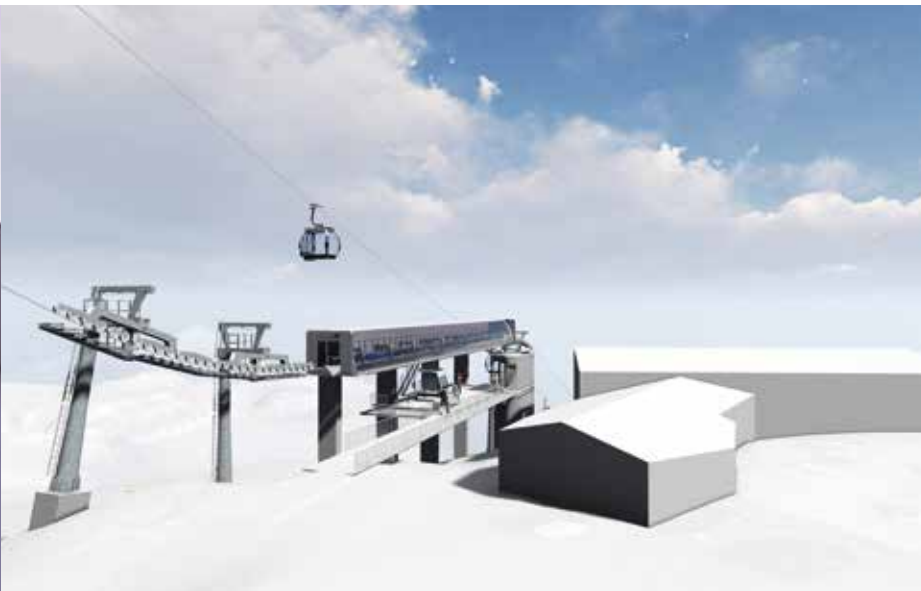
### FACTS ABOUT THE GLACIER AND WINTER SKI AREA SÖLDEN

- Absolute snow guarantee from October to May thanks to the high Alpine location of the ski area 1350 – 3340 m
- 2 glacier ski areas at Rettenbach (2675 – 3250 m) & Tiefenbach (2795 – 3249 m)
- Linked winter and glacier ski areas  
Glacier ski slopes are connected to winter ski runs via the Golden Gate to the Glacier connecting ski lifts
- Women's and Men's FIS Alpine Ski World Cup opening in late October
- Artificial snow-making systems covering about 76% of all slopes
- The 2 most powerful feeder mountain gondolas world-wide
- Giggijoch gondola 4500 persons/h
- Gaislachkogel gondola 3600 persons/h
- Altitude difference of 2000 m
- Longest ski trail from the BIG3 viewing platform at Schwarze Schneide (3340 m) down to the valley (1350 m)
- 31 top modern mountain lifts with a total hourly capacity of 65,000 persons
- 144 slope kilometers
- 69.8 km blue runs (48.6%), 44.8 km red runs (31.1%), 27.4 km black runs (19.0%)
- 2 km ski route (1.3%)
- Approx. 400 m<sup>2</sup> skiable terrain/skier or 25 skiers/hectare
- BIG3 – 3 skiable peaks higher than 3000 m in the ski area
- 3 ultimate mountain peaks higher than 3000 meters, accessible by state-of-the-art mountain lifts plus viewing platforms and XXL panoramas
- Schwarze Schneide (3340 m) – highest point in the ski area, Tiefenbach glacier (3250 m) and Gaislachkogel (3048 m)
- 007 ELEMENTS – James Bond Installation  
A unique world first adventure focusing on James Bond
- 33 ski huts within the ski area
- ice Q Restaurant – James Bond location  
Toque-awarded ice Q gourmet restaurant at Gaislachkogel peak (3040 m) as filming location of the James Bond movie „Spectre“
- Adrenalin Cup  
The fun-filled Adrenalin Cup is a fully automated contest comprising 9 different disciplines for everyone. All disciplines are measured electronically. You can check scores, photos and videos online.
- Car Park for private cars and busses
- Skibus shuttle service
- Ski schools & sport shops



**CONTACT**  
Bergbahnen Sölden  
T +43 (0) 5254 508 0  
Dorfstraße 11 | 6450 Sölden  
bergbahnen@soelden.com





## ice Q Gourmet Restaurant

Just as legendary as James Bond himself, the ice Q gourmet restaurant at the summit of Gaislachkogel was uniquely presented as a breathtaking 007 filming location. Due to its outstanding location and the stylish, modern architecture, the gourmet restaurant opened in 2013 ranks among the most spectacular buildings in the Alpine region. In this ambience at the heart of the magnificent mountain world and with a free suspension bridge to the summit, the ice Q Restaurant and the ice Q Lounge invite you to exclusive enjoyment. The ice Q has been awarded one Gault Millau Toque and is thus the world's highest award-winning restaurant. Additionally, the ice Q received the renowned Ambiente Award. The culinary summit spot perfectly combines „Alpine Cuisine“ and fine wine culture in a harmoniously inspiring setting.



### FACTS

- 100 seats inside the restaurant
- Sun terrace offering magnificent panoramic views (40 seats outdoors)
- ice Q Lounge (80 m<sup>2</sup>) for exclusive celebrations for up to 40 people, seminars, incentives with private sun terrace
- Home of the „PINO 3000“ 3-country wine
- Exclusive bookings available (parties, weddings, conferences...)

### CONTACT

ice Q | Monika Wöckl  
T +43 (0) 5254 2260  
6450 Sölden | Austria  
info@central-soelden.at | iceq.at  
N 46°57'35.7" E 11°00'32.4"

## Rotkoglbahn Gondola

In line with the top-quality accommodation offer, guests in Hochsölden will benefit from a state-of-the-art feeder gondola lift from the 2019/2020 winter season onwards. The former double chairlift (built in 1986) is replaced by a modern mountain gondola of market leader Doppelmayr. From the base station passengers reach Giggijoch in less than six minutes. The already existing lift route on a length of 1.2 km will remain almost unchanged.

### DIRECTLY CONNECTED

The new gondola gives also non-skiers direct access to Giggijoch. Especially for children and beginners the gondola promises both comfortable and safe transport to the beginner's ski area. Another important facet is the quick and easy accessibility not depending on snow conditions and the skiing skills of winter sports fans. In autumn and spring Hochsölden can't always be reached on skis and slopes. Thanks to the new mountain gondola the hotel village moves even closer to the ski area. Other advantages include very low access and exit speeds in the stations, protection against wind and weather in the cabin and barrier-free access and exit areas.

### FACTS

- Mountain gondola with 10-person cabins
- 23 cabins
- Hourly capacity of 1330 persons
- Barrier-free access

## Toboggan Run

Tobogganing fans can look forward to December 2019. A family-friendly toboggan run, leading through varied landscapes with beautiful panoramic views, will be available. It takes you from the middle station of Gaislachkogel gondola down to the valley floor in Sölden. A fun-packed experience in close touch with nature for all winter guests, focusing on memorable moments amidst the Alpine landscape.

### NIGHT TOBOGGANING EVERY WEDNESDAY

In the 2019/2020 season, the more than 7 km long toboggan runs is open all day during operating hours. Once a week the toboggan run is illuminated and open also in the evening hours on occasion of the night skiing event. The starting point is easy to reach thanks to Gaislachkogel mountain gondola I.

### FACTS

- Total length: 7.2 km
- Ø width: 3.5 m
- Ø gradient: 12 %





**CONTACT**

Venter Seilbahn GmbH & Co. KG  
 Franz-Senn-Weg 21 | 6458 Vent  
 T +43 (0) 5254 8154  
 bergbahnen-vent@aon.at  
 www.vent.at  
 N 46°51'36.9" E 10°54'54.3"



## Ski Area

A more leisurely pace awaits you in Vent amid a basin of Venter Tal valley. The small mountaineering village at the foot of Talleitspitze peak nestles at 1900 meters above sea level and has preserved its charming character for centuries. A perfect place to enjoy winter, sports and nature. For beginners and advanced skiers, adults and children, the easy to intermediate runs offer skiing fun until late April. So much naturalness is made to measure for all winter and snow sports fans who appreciate untouched nature, winter idyll and unspoilt mountain slopes: the entire Venter Tal valley offers countless rewarding routes, ranging from tours through old stone pine forests and high Alpine pastures. No matter if you choose the serviced Stableinalm or the quiet Ramolalm - mountain winter is pure and unadulterated here.

**FACTS**

- Snow guaranteed and plenty of sun thanks to high Alpine location (1900 fm – 2646 fm)
- Stablein panoramic restaurant - cozy atmosphere and hospitality
- Best services for winter sports fans plus ski mountaineers guided by the ski school and Vent mountain guides
- 2 chairlifts & 2 T-bar lifts
- 15 slope kilometers (easy 5 km, intermediate 10 km)
- 2 km of cross-country skiing trails
- 15 km of winter walking trails
- 5 km Stablein toboggan run
- Snow playground

vent.at

## Vent Ski Mountaineering Loop Trail

**ON YOUR CLIMBING SKINS, GET SET, GO!**

In only five days to the highest peaks of the Ötztal Alps: The Vent Ski Mountaineering Loop Tour - also known as „Ötztal's Haute Route" - is a true ski touring classic and one of the most popular multi-day ski tours in the Eastern Alps. Even alpinists from France and Switzerland head towards Upper Ötztal to enjoy this tour. No other Alpine crossing in Austria features so many highlights in such a small area, including superb 3000 meter high summits, eternal glaciers and cozy Alpine huts. Reason enough for every ambitious ski touring fan to put

this multi-day tour to the top of the tour list. The Vent Ski Mountaineering Loop is a tour where you leave everyday life behind in just a few minutes by collecting scenic impressions and beautiful pictures that last for the entire touring winter. By the way, ski mountaineers experience genuine Tirolean hospitality on this Alpine crossing on skis and can end the day in one of the very comfortable mountain huts to plan new adventures. True to the motto: Fix your climbing skins. Ascend. Ski downhill.





GURGL.  
THE DIAMOND OF THE ALPS.

#### **OBERGURGL-HOCHGURGL 1800 – 3080 M**

Apart from the glacier regions, Gurgl is one of the first ski areas to open its mountain lifts and slopes already in mid-November. In total, winter sports fans have access to 112 fine slope kilometers of all difficulty levels, which are located at altitudes between 1800 and 3080 meters above sea level. The 37 km of blue runs, 55 km of red runs and 20 km of black ski slopes are served by 25 top modern mountain lifts with a total hourly capacity of over 42,000 persons. Therefore skiing fun without waiting times is guaranteed. Wide open ski runs promise ultimate skiing pleasure with a maximum of safety.

#### **TRULY UNIQUE INFRASTRUCTURES:**

Almost all hotels and accommodations are located directly on the ski slopes and no less than 6 mountain lifts promise quick access to the slopes. That's what we call ski-in & ski-out deluxe.

#### **FUN MOUNTAIN WITH FUN CROSS, FUN SLOPE, FAMILY PARK & SNOW PARK**

The Audi quattro Funslope in Obergurgl and the Funslope Hochgurgl make a perfect blend of snow park, piste and boarder cross, featuring easy but spectacular obstacles. If you prefer ultimate speed you should stop by at the Funcross where speed and athletic skills are required. For the first freestyle attempts the Familypark next to Bruggenboden lift is strongly recommended, offering easy elements also for novices. Advanced freestyle fans will find a challenging setup and various event highlights plus coaching and contest in the Snowpark at Steinmann lift.

#### **SKI AREA FACTS**

- Snow guarantee from mid-November to late April
- Ski area between 1800 and 3080 m
- 25 mountain lifts with a capacity of 42,000 persons per hour
- 112 km of ski runs: easy 37 km, intermediate 55 km, difficult 20 km
- 13 ski huts in the ski area and 12 hotel restaurants right on the slopes
- No lift lines due to 6 mountain lifts from the village: Hochgurglbahn, Festkogelbahn, Hohe Mut Bahn, Roßkarbahn, Große Karbahn and Kirchenkarbahn
- Maximum safety thanks to wide open, uncrowded slopes
- 3 km long natural toboggan run in Hochgurgl incl. in the skipass
- Every Tuesday: night skiing with ski show in Obergurgl from 6:30 pm
- Every Thursday: night skiing and night tobogganing in Hochgurgl from 7:30 pm
- Free parking & free WiFi in the ski area
- 21 persons per hectare or 476 m<sup>2</sup> of skiable terrain per skier



#### **CONTACT**

Liftgesellschaften Gurgl  
T +43 (0) 5256 6260  
Gurglerstraße 93 | 6456 Obergurgl  
bergbahnen@obergurgl.com



# Top Mountain Star

## PANORAMA BAR HIGH ABOVE EVERYDAY LIFE

The Top Mountain Star glazed all around towers high above the valley on a narrow ridge of Wurmkogel and is a typical „must-see“! This architectural masterpiece at 3030 m enchants visitors with its futuristic design and awe-inspiring views. Fine, selected snacks and dishes complement this adventurous highlight amidst the ski area. Special tip: pleasant live music is scheduled at the Panorama Bar every Saturday.

## EXCLUSIVE VIEWING PLATFORM

It doesn't matter if someone climbs the stairs to the glazed Panorama Bar for the first time or returns as a regular guest: the view of the mighty Ötztal Alps up to Italy's Dolomites from the Top Mountain Star always makes an outstanding experience - and simply happy. To enjoy these feelings even more, guests can treat themselves to a fine snack or drink served by the friendly bar staff. At eye level with mountain peaks and the sky you can restore your energy for the wonderfully long ski run down from Wurmkogel or enjoy a sundowner in an incomparable ambience. Special tip: you can also book the Top Mountain Star for your personal summit party!

## CONTACT

Liftgesellschaften Gurgl  
Gurglerstraße 93 | 6456 Obergurgl  
T +43 5256 6260  
obergurgl@oetztal.com  
N 46°52'48.7" E 11°04'58.5"



# Hohe Mut Alm

Enjoy the most beautiful mountain ridge in Tirol. Hohe Mut vantage mountain on the southern edge of the ski area offers a superb 360-degree view of 21 peaks higher than 3000 meters and glaciers. And if that weren't enough: the 2670 meter high Hohe Mut Alm mountain restaurant garnishes the view with culinary creations at the highest level. All sensory impressions merge into a single word on the large sun terrace: Wow! Highlight every Wednesday: jovial hut evening from 6.30 pm.

Private celebrations, weddings, festive menus for all occasions or corporate events without ifs and buts are in good hands here. On request, we will professionally take care of the perfect setting and order of events for up to 230 guests. On request we also organize the appropriate musical fringe program and entertainment highlights for a successful celebration.

## CONTACT

Liftgesellschaft Gurgl  
Gurglerstraße 93 | 6456 Obergurgl  
T +43 (0) 5256 6260 551  
info@hohemutalm.at  
www.hohemutalm.at  
N 46°50'55.0" E 11°01'43.0"



# Top Mountain Crosspoint

A modern mountain lift station comprising the base terminal of Kirchenkar Gondola, an exceptional motorcycle museum featuring a unique collection and a restaurant area for up to 700 guests - everything under one roof in a contemporary building with eye-catching, elegantly curved elements and a very special architectural language. Experience variety in the high Alpine area: really worth seeing - the Top Mountain Crosspoint, a modern and multifunctional building covering 6060 m² with splendid views of Gurgl's ski area and the Ötztal Alps.

## CONTACT

Mountain Motorcycle GmbH & CoKG  
T +43 (0) 5256 6265 910  
crosspoint@tophochgurgl.com  
www.crosspoint.tirol

## Timmelsjochstrasse

86456 Hochgurgl  
N 46°54'35.3" E 11°03'12.1"



# Gurgl Carat

Gurgl not only promotes the sporty and hedonistic way of life, but also research and intellectual exchange. The construction of „Gurgl Carat - Congress & Event“ in the mountain village offers a state-of-the-art event center. Designed as a modern conference and event center, it boasts state-of-the-art seminar, stage and sound technology at the highest level. Depending on the room layout and seating options, there is enough space for up to 600 persons. Obergurgl has been a popular venue for important symposia and congresses for many decades.

## CONTACT

Ötztal Tourismus Congress & Incoming GmbH  
Gurgler Straße 118 | T +43 (0) 57200 150  
info@gurgl-carat.com | www.gurgl-carat.com  
N 46°52'14.8" E 11°01'38.2"





## Off the Beaten Slopes

### SKI TOURS

Step by step towards untouched nature. Freshly fallen snow crunching under your feet, Upper Ötztal's majestic mountain peaks towering high above you: ski mountaineers really get into gear in Gurgl - in the truest sense of the word! No matter if you are a ski touring novice or an experienced ski mountaineer, the Diamond of the Alps offers a brilliant selection of tour options at all levels of difficulty - ranging from beginner-friendly pleasure ski tours to multi-day „hautes routes“. Those who conquer the wintry mountain world around Gurgl in the most original way, can't only look forward to top-class nature exploration but also to pristine powder snow slopes and almost untouched downhill stretches. In the spring, as soon the snow slowly turns into firm, corn snow lovers will find a true heaven here.

### SNOWSHOE HIKING

Winter walking & snowshoe hiking in Gurgl. Also winter hikers are surprised in Upper Ötztal: the pace is just perfect to admire the untamed beauty of the mountain landscape in a truly relaxing way. 17 km of cleared and well-marked winter hiking routes lead through snowy pine forests, across winter-white meadows or along Gurgler Ache mountain brook. On guided snowshoe hikes adventurers discover the countryside in all its facets.

### GUIDED SNOWSHOE HIKES

Off the bustling village centers you can trek across snow-covered no-man's-land with only the sounds of nature in your ear: that's what makes snowshoe hiking in Gurgl so special. The local ski schools organize taster snowshoe walking tours on „yeti's tracks“ every Wednesday afternoon. The guides decide the tour's destination at short notice - depending on the weather and snow conditions. Of course, the complete equipment for this approx. 2-hour adventure is provided.

### TOBOGGANING

Exciting turns and speed on safe tracks. Fun-filled cheers can be heard even from a distance: top notch sledding fun is waiting for you on the 3 km long, snow-sure natural toboggan run leading from the top to the base station of Hochgurgl Gondola. Also more often than once a day as the uphill gondola ride from Pill is can be made effortlessly. The weekly held night tobogganing with a stop at the Downhill Grill restaurant marks a sociable holiday highlight for all ages.

- Daily from 9:00 am to 4:00 pm
- Night tobogganing and night skiing in Hochgurgl from 7:30 pm to 10:30 pm
- Free shuttle bus for night tobogganers from Gurgl and Sölden
- Toboggan rental at Scheiber Sport at the base and mountain station (Top Hotel Hochgurgl)
- The lift ride is free for all lift ticket holders
- Also at Wiesen lift and Mahdstuhl lift in Gurgl children can enjoy tobogganing and snow sliders

### TIROLEAN QUALITY SEAL FOR NATURAL TOBOGGAN RUNS

The natural toboggan run in Gurgl was awarded the official Tirolean natural toboggan quality seal by the province of Tirol. Severe criteria and safety standards must be met in order to receive this quality seal (for example: width of run, regular maintenance, snow reliability, signposts).



➤ [oetztal.com](https://oetztal.com)

# Summer in Ötztal

It is not easy to combine all holiday preferences. The tastes in terms of holiday arrangements could hardly be more different: while some have been training for months to be fit for glaciers and trekking tours, others dream of steep walls and climbing routes as far as the eye can see. The little ones probably want to meet cows, sheep and horses in their most natural surroundings on lush Alpine meadows while the older ones dream about sweet idleness - preferably in a wellness paradise. What connects all these characters? The love for nature and the mountains, the passion for thrills and relaxation, coupled with a reasonable dose of culture. The 67 kilometer long Ötztal boasts not only the

highest mountains in Tirol but also heaps of variety spread all over valleys and mountains - every type of vacationer can choose the favorite option.

It doesn't matter if you make a leisurely hut hike or if you climb even further. If you enjoy a wooden rowing boat on Lake Piburger See or if the white water splashes in during a river rafting tour. If you playfully learn to understand life in the Stone Age at the Ötzi Village or if you just let your mind wander at the AQUA DOME thermal spa: it's just important that you laugh a lot, enjoy the moment and consciously perceive the power and beauty of nature.



📍 Hemerachalm Hut, Niederthai





## Ötztal Premium Card & Ötztal Card

### ÖTZTAL PREMIUM CARD. YOUR INCLUSIVE CARD.

Stay overnight at one of our 300+ Ötztal Premium Card Partner accommodations and take full advantage of all benefits included! You receive the Card in your accommodation. The Ötztal Premium Card is valid from the second day of your stay (day of arrival is excluded) for the duration of your holiday!

#### ONLY FOR ÖTZTAL PREMIUM CARD HOLDERS

- Selected Ötztal Nature Park hikes included
- Only during certain periods:
- Two free admissions: AQUA DOME
  - 3-hour ticket (sauna not included)
  - Two free admissions: AREA 47 (Water Area)

### ÖTZTAL CARD. PURCHASE YOUR CARD.

Purchase the Ötztal Card in one of more than 60 selling points and discover all the valley's highlights! For those who don't stay at an Ötztal Premium Card accommodation.

- Children (born 2005 – 2013)
- Children born 2014 or after are free of charge (photo ID required!)
- The Ötztal Card is valid on 3, 7 or 10 consecutive days
- Reductions from disability degree of 70 % (disabled pass required!)
- Group rates available on request

### ALL THE VALLEY'S HIGHLIGHTS INCLUDED

- All summer mountain lifts in Ötztal
- All public transport lines in Ötztal
- AQUA DOME – Tirol Therme Längenfeld
- AREA 47 – The ultimate outdoor playground
- Outdoor pools, swimming lakes and indoor pool
- Ötztal museums
- Discounts at varied bonus partners

Information subject to change!



## Climbing in Ötztal

### STEP BY STEP CLOSER TO THE SKY

Ötztal is THE undisputed (granite) climbing region in Tirol. There is no other valley with so many beautiful climbing areas and climbing routes in such close vicinity. Incredible 750 climbing routes spread over countless climbing gardens from the entrance to the valley at about 600 meters altitude up to the glacier areas near Obergurgl at almost 2000 meters, Ötztal valley has the right climbing spot for everyone.

- 19 climbing gardens featuring 750 routes
- 8 via ferratas
- A wealth of multi-pitch tours
- Certified and local climbing & mountain guides
- Yearly held Ötztal Climbing Camps with training for beginners to experts
- Specialized climbing accommodation in the valley



## Ötztal Cycle Trail

### CYCLING PAST FIVE VALLEY TERRACES

Leading past five valley terraces, the Ötztal Cycle Trail opens up a special variety of landscapes: from the sunny and dry climate at the valley's entrance via the wide open plains of Umhausen and Längenfeld towards the end of the route in Sölden, encircled by mighty 3000 meter high peaks. Only very few cyclists will be able to master the Ötztal Cycle Trail in one day - congrats if you are among them! We recommend to conquer the route in stages, so you have time to enjoy the landscape and admire all highlights spread along the Ötztal Cycle Trail.

- Starts in Haiming at 663 meters
- Ends in Sölden at 1360 meters
- Branches off from one of Europe's longest cycle trails - the Inn Cycle Path
- 52 kilometers through the mountain scenery of the Ötztal Alps
- Difficulty levels: easy to intermediate
- Suitable for families, e-bikers and mountain bikers
- Cycle trail partially shared with pedestrians





# Ötztaler Urweg

## LONG-DISTANCE HIKING FROM VILLAGE TO VILLAGE

Varied landscapes and impressions, awesome rocky regions and gentle Alpine meadows invite you to experience culture, culinary delights and unique nature exploration. The focus is always on the Ötztaler Ache mountain brook in all its different facets - just as varied as the landscape in Ötztal. Either wild and fierce or calm and peaceful, original and full of silence!

- Bookable long-distance hiking on Ötztaler Urweg - plan and book your memorable hiking adventure on Ötztaler Urweg and enjoy professional services: personal travel advice, surprising packages, certified partner lodgings, luggage transport, shuttle services and much more!
- Hiking in 12 stages from the valley towards rivers and meadows, up to high Alpine areas with a view
- Varied hiking between villages on the valley floor and romantic mountain hamlets
- Get in close touch with the mountain giants beyond 3000 meters, such as Wildspitze or Similaun - the true stars of Ötztal
- Can be started in any village
- Enough parking areas on site
- Excellent network of bus lines available for return transfers

# Ötztal Trek

## CLIMBING AT THE PEAK OF TIROL

Explore the highest regions of Ötztal - along the scenic Ötztal Trek: the high Alpine long-distance hiking trail makes it possible! 6 routes featuring 2 to 5 day stages are ideal for a memorable vacation at the Peak of Tirol amidst the Ötztal mountains. Of course prior Alpine experience is required for these routes. Most stages are classified as difficult „black mountain trails“ according to the „Tirolean hiking and mountain trail concept“, the other stages are „red hiking trails“ of intermediate difficulty.

- Total of approx. 17,000 altitude meters, length 215 km
- 6 routes, comprising a total of 22 stages
- From Ötztal-Bahnhof eastwards over cols, ridges and peaks, from hut to hut to Obergurgl and Vent
- Return to Ötztal Bahnhof on the western Geigenkamm ridge
- Some stages lead across the eternal ice (usually without signposts)
- Accurate tour planning is essential
- Appropriate Alpine hiking equipment is an absolute must for all mountaineers

# AREA 47

At the unrivaled AREA 47 you can choose from more than 35 different (fun) sports, for example river rafting, canyoning, mountain biking, high ropes course or wakeboarding. Such a great combination of comprehensive sports options plus several accommodation facilities, restaurants, meeting amenities and party locations right on site makes the AREA 47 a truly unique experience for your teams.

In addition to state-of-the-art technical devices and the right equipment for every activity, our certified guides provide the safety required. According to your wishes we create individual all-in-one offers for groups of 1 - 400 persons. Thinking outside the box is of utmost importance when it comes to planning your event, we provide you this very special service in order to meet all your needs. We are available on the spot from start to finish, we help you plan and organize a made to measure event. On request we also take care of the event's coordination on site.

## CONTACT

AREA 47 Betriebs GmbH  
Ötztaler Achstraße 1 | 6430 Ötztal-Bahnhof | Austria  
T +43 (0) 5266 876 76 | [info@area47.at](mailto:info@area47.at) | [area47.at](http://area47.at)  
N 47°13'43.2"E 10°50'52.1"

## MORE THAN 35 ACTIVITIES

- Rafting – Canyoning
- Caving – High Ropes Course
- Flying Fox – Mega Swing
- KTM Motocross – MTB Tours
- Wake AREA – Water AREA

## MEETINGS & INCENTIVES

- Meeting Lodge (for up to 120 people)
- Team building events
- Group specials (towel service, exclusive tours, hostess service, etc.)

## LIVING

- Double & triple rooms
- Lodges

## FOOD

- 2 restaurants and several bars





# WIDIVERSUM Hochoetz

The Hochoetz pasture region with its unrivaled WIDIVERSUM HOCHOETZ is a member of the „Best Austrian Summer Mountain Lifts“. The WIDIVERSUM Hochoetz is all about finding the magic crystal. From the milk jug xylophone to the water playground, from the magic ravine to the woolen play forest: a total of 36 activity stations await adventurous kids and their companions at the WIDIVERSUM HOCHOETZ - positioned around a large mountain lake and spread along 3 new theme trails and 4 huts. Young explorers can learn interesting and unexpected facts about Ötztal, its nature treasures and the unique dialect at the interactive knowledge stations. At the end of the exciting mission there will be a reward for those who have found the crystal.

## CONTACT

Bergbahnen Hochoetz | Angerweg 13 | 6433 Oetz | T +43 5252 63 85 | [info@hochoetz.at](mailto:info@hochoetz.at) | N 47°12'46.3" E 10°55'48.0"  
[oetz.com/widiversum-en](https://oetz.com/widiversum-en)



# Piburger See Nature Treasure

## ONE OF TIROL'S WARMEST SWIMMING LAKES

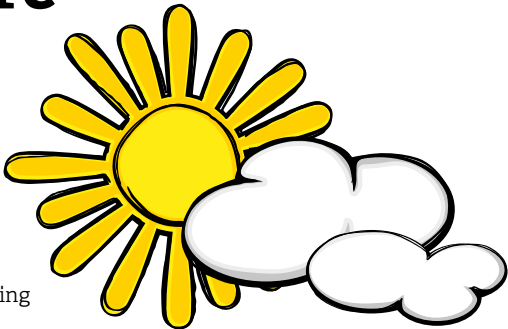
Lake Piburger See is the landmark and nature treasure of Oetz. Initially, the lake's basin was a deep ravine running parallel to Ötztal. Thanks to the landscape of awesome natural beauty the lake is a popular excursion site. Walkers discover charming nature highlights along the trails surrounding Lake Piburger See: Wellerbrücke bridge, Achstürze falls near Ötztaler Ache brook or Lake Habicher See.

Shuttle: Oetz – Piburg – Oetz (summer & winter)  
 More details on bus schedules available at all Ötztal Tourismus Offices. Sorry, bicycles are not allowed on the lakeshore. Dogs must be on leads!

- Altitude: 913 m
- Shoreline: approx. 1.9 km
- Length: approx. 800 m
- Width: approx. 240 m
- Depth: approx. 25 m
- Up to 24° Celsius
- Rowing boat rental
- Barrier-free trail: Piburg – swimming bath, barrier-free WC

N 47°11'43.6" E 10°53'20.6"

[oetz.com/lake-piburger-see](https://oetz.com/lake-piburger-see)



# Historical Center & Museum in the Tower Oetz

## OETZ HISTORICAL VILLAGE CENTER

The old village center of Oetz is still very well preserved. Starting at the height of Georgsbrunnen fountain, which was named after St. George, the center extends from the main village road to the church. Oetz is known for its partly very old, fresco painted facades. Especially eye-catching is Gasthof Stern built in 1573, one of the oldest buildings in the village. Even older, however, is the „Tower of Oetz“ erected already in the 14th century as a nobleman's residence. Today it houses a museum with myriad art treasures giving an insight into Ötztal's history of art.

## MUSEUM IN THE TOWER

The five-story medieval building was opened in 2004 as a museum, based on the fabulous Hans Jäger art collection. It focuses on the artistic view of Tirol and Ötztal valley in particular: the museum in the tower shows countless long forgotten treasures ranging from medieval art gems and Renaissance portraits to folk art - for example votive panels and monastery works - and Biedermeier scenes plus magnificent landscape paintings from the 20th century.

## CONTACT

Turmmuseum Oetz  
 Schulweg 2 | 6433 Oetz  
 T +43 (0)664 910 23 21  
[info@oetztalermuseen.at](mailto:info@oetztalermuseen.at)  
 N 47°12'14.6" E 10°53'57.1"





## Stuiben Falls

The mighty waters of the Stuiben Falls, Tirol's biggest waterfall, are rushing down into the valley from a height of 159 meters. The several meter-high area filled with water crystals can be seen from far, and these clouds of water dust particles also gave the name to the „Stuiben Falls“. The water particles are said to have refreshing and varied other positive effects on the hikers' health. Five exposed spots equipped with viewing platforms invite visitors to indulge in the breathtaking scenery. Additionally, a huge 80-meter long suspension bridge offers uninterrupted panoramic views of the ravine. From May to October, guided lantern walking tours to the floodlight Falls are held every Wednesday evening. And as if that weren't enough, true sports aficionados can conquer the Stuiben Falls on a 450-meter long via ferrata route, followed by the undisputed highlight of the tour: the crossing of the waterfall! A good head for heights and is absolutely required.

### CONTACT

Ötztal Tourismus Information Umhausen-Niederthai  
Dorf 24 | 6441 Umhausen  
T +43 (0) 57200 400  
umhausen@oetztal.com  
www.umhausen.com

N 47°07'36.7" E 10°56'57.0"

## Ötzi Village

How was everyday life in Ötztal some 5000 years ago? Which clothes protected from cold weather? Which hunting weapons were used at that time? In the Ötzi Village, an Archaeological Outdoor Park, you can catch a glimpse of the Stone Age and get to know more about Ötzi's life and everyday activities. Since Ötzi - the „Man from the Ice“ - was discovered by chance in 1991, he has become the Alps' most sensational archaeological attraction that gave a detailed insight into the daily life of our ancestors. In the splendid Ötzi Village you travel back in long past times, and learn many interesting facts on living, housing and hunting in the Neolithic Period. Prehistoric buildings, ancient hunting and housing tools and old farm animal species can tell a lot of stories about the prehistoric era. Varied workshops are held as well. How can you make a fire by using stones? Who is the undisputed archery champion? How does original bread taste, prepared according to ancient recipes?

### CONTACT

Ötzi-Dorf Umhausen  
Am Tauferberg 8 | 6441 Umhausen  
T +43 (0) 5255 5002 2  
office@oetzi-dorf.at  
www.oetzi-dorf.at

N 47°07'54.7" E 10°56'05.3"  
Opening times: May – October

## Birds of Prey Park

Here at the scenic Birds of Prey Park you can get in close touch with Tirol's heraldic animal – the Eagle – in the huge 5000 m² open-air park where some 30 animals and 15 different bird of prey species can be admired. Among the visitors' favorites are vultures, kites, owls, buzzards, ravens, falcons and many other birds of prey that make this splendid outdoor arena a real attraction for animal and bird lovers. Those who are fond of spectacular bird shows get together in the huge open-air arena offering some 300 seats. Bird shows take place daily, attracting a huge number of visitors from near and far. Admire the fantastic flight skills and entertaining programs performed by the local animal trainers and their birds of prey. A special theme walking trail on the „History of Falconry“ and a Falconry Shop add to a great day in the splendid Birds of Prey Park which promises an unforgettable day in the outdoors.

### CONTACT

Greifvogelpark Umhausen  
Am Tauferberg 8 | 6441 Umhausen  
T +43 (0) 5255 5002 220  
office@greifvogelpark.at  
www.greifvogelpark.at

N 47°07'54.3" E 10°56'04.6"  
Opening times: May – October

## Natural Swimming Lake

The Natural Swimming Lake in Umhausen, nestling in close vicinity to the Ötzi Village and the Birds of Prey Park, makes a truly perfect place for relaxation from June to September. The refreshing lake with perfect drinking water quality is great for cooling off on a hot summer day. Spacious sunbathing areas offer plenty of space for relaxing and winding down. Beach volleyball fields and tennis courts provide for sporty fun in-between. A large children's playground with water slide promises great fun for the youngest guests. A diving tower and many culinary delights complete the offer at the natural swimming lake in an exemplary way. This is absolutely the best place to be when the summer sun is shining from a deep blue sky. Get ready for the lake and jump into the cool water.

### CONTACT

Badesee Umhausen  
Am Tauferberg 1 | 6441 Umhausen  
T +43 (0) 5255 5230 30  
badesee@umhausen.gv.at  
www.umhausen.com

N 47°07'55.6" E 10°55'58.5"  
Opening times: June - September





## Local Heritage & Outdoor Museum

### HISTORY

The ensemble positioned around the local heritage museum in Längenfeld's hamlet of Lehn is a unique documentation of Ötztal's cultural and everyday history. As one of the last entirely preserved village centers in the valley, the museum and its historic buildings - standing side by side with „normal“ single-family houses - gives like no other ensemble a deep insight into the social and economic history of Ötztal: the adjacent properties are not fenced and formerly important functional locations such as the oven or the fountain in the center were shared by several families.

At the end of the 1960s, the centuries-old houses no longer met the living standard, the first buildings were acquired by the „Öztaler Heimatverein“ and remodeled into a museum. The museum documents the historic and rural culture of the valley.

### MUSEUM BUILDING AND COLLECTION

The Local Heritage & Outdoor Museum mainly shows everyday objects as well as historical working

and crafting tools. In the museum's garden formerly important plants are still cultivated, for example Ötztal flax which has represented the most important extra income of many Ötztal farmer's families until the 19th century. The museum area comprises about 11 historical buildings. On the one hand, they give visitors an insight into everyday life on a farm at that time, on the other hand they show elaborate work processes in the production of wool, linen, bread, butter, etc.

### OPENING TIMES

*June – September*

Monday – Friday, 10:00 am – 12 noon & 2:00 pm – 5:00 pm

Sunday 2:00 pm – 4:00 pm

Closed on Saturdays

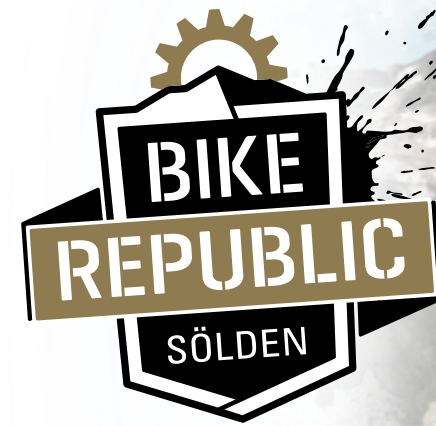
Guided tours (groups) outside opening hours available on request.

### CONTACT

Heimatismuseum Ötztal  
Lehn 24 | 6444 Längenfeld  
T +43 (0)664 910 23 21  
info@oetztalermuseen.at

N 7°05'03.6" E 10°56'42.8"

➤ [laengenfeld.com](http://laengenfeld.com)



## BIKE REPUBLIC SÖLDEN

Welcome to the BIKE REPUBLIC SÖLDEN! More than 63 km of breathtaking single and flow trails of all difficulty levels, two pump tracks and top modern infrastructures that leave nothing to be desired, promise a biking experience in a class of its own! The Bike Republic Sölden even has its own language. The Ötztal dialect has strongly influenced the naming of lines by describing also the characteristics of the respective trails in a very special way.

### FACTS

- 11 man-made lines (35 km)
- 14 single/naturals trails (27 km)
- 2 pump tracks
- 4 mountain lifts offering bicycle transport
- 8EUB Gaislachkogel I (675 persons/h)
- 10EUB Giggijoch (450 persons/h)
- 6SK Langeeggbahn (480 persons/h)
- Zentrum Shuttle
- Longest downhill stretch on about 13 km, 1300 altitude meters from Rotkogelhütte (2666 m) to the valley floor (1350 m)

➤ [bikerepublic.soelden.com](http://bikerepublic.soelden.com)



**RIDERS  
RULE!**





## Glacier Road

The Ötztal glacier road is one of the Eastern Alps' highest routes, leading from the village center of Sölden to the ski areas of Rettenbach and Tiefenbach glaciers. The glacier road is fully asphalted and broad enough for all types of coaches and buses. As the road leads into high Alpine terrain up to over 2800 m a drop in temperature and/or sudden precipitation are possible at any time. Therefore it is strongly recommended to take snow and track chains with you.

### FACTS

- Europe's highest asphalt road point at over 2,800 meters above sea level
- Highest road tunnel of the Alps with a length of 1.7 km
- One of the Eastern Alps' highest roads leading on 15 km from Sölden to the two glacier areas
- Tiefenbachbahn 8-person mountain gondola station at 3250 meters with vantage platform (BIG 3)
- Schwarze Schneidbahn 8-person mountain gondola incl. panorama platform at 3340 meters (BIG 3)
- Ample (bus) parking
- Restaurants at Tiefenbach & Rettenbach glaciers
- Film shooting location of James Bond 007 „Spectre“



## Alpine Summer

For many mountain lovers the Ötztal Alps are a by-word for stunning Alpine landscapes. There is an infinite choice of walking, hiking, climbing and mountaineering routes leading right to the heart of the breathtaking mountain scenery. Bergbahnen Sölden Lift Company operates also 7 summer mountain lifts. They whisk mountain fans effortlessly up to the Alpine pastureland areas high above Sölden or towards high Alpine tour destinations.

### ALMZEIT

Scenic ALMZEIT is a family theme trail that focuses on the variety and the special character of mountain huts and Alpine pastures in Sölden's mountains. Several activity stations center on varied topics related to the unique pastureland region, a magnificent theme path from TIME to TIME. The huts and Alpine pastures feature information boards and serve themed meals and dishes while a huge variety of events is scheduled as well. Exciting attractions and interactive play stations ensure that all the family can enjoy their personal ALMZEIT with all senses. Fun and games, breathtaking views, fine culinary treats or musical delicacies await you on the huts & Alpine pastures of Almzeit in Sölden.

## Discover and Explore Nature

In summer Vent makes a heaven for hikers and mountaineers. Beautiful mountain trails, picture-book sunrises, glacier-framed high Alpine valleys, pure nature enjoyment. Hiking routes from flowering Alpine meadows up to the eternal ice! Gain an impression that remains unforgettable. Eight Alpine Club and refuge huts await you here. Endless mar-

ked trails invite walkers to enjoy unlimited hiking tours. The whole scenery is dominated by Tirol's highest mountain - Wildspitze at 3774 m. Discover Ötztal's unique fauna and flora on a guided hike. Certified local nature guides accompany you up hill and down dale, through forests and meadows, towards crystal-clear mountain lakes, past thundering

waters up to the glacier regions. Ötztal Premium Card holders enjoy guided Ötztal Nature Park hikes for free from June to October. The offer ranges from easy to difficult tours, suitable for hikers and mountaineers alike.

[vent.at](https://vent.at)



BERGSTEIGER  
DÖRFER







## Hiking

With the summer mountains lifts you can easily reach the trailheads of countless scenic hiking tours. Relax and wind down on the viewing platforms above 3000 meters altitude or take a rest in the mountain huts which are a worthwhile destination even in bad weather.

### HOHE MUT GONDOLA OBERGURGL

- Mountain gastronomy at the highest level, top location for events
- Panorama: view of 21 three thousand meter high peaks & many glaciers
- Starting point of myriad hikes
- Spacious playground for children and teens
- Nature Park info point „Glacier - Climate - High Alpine Research“

### HOCHGURGL & TOP WURMKOGL HOCHGURGL LIFTS (1793 – 2700 M / 2700 – 3064 M)

- Breathtaking panoramic views: Dolomites, Ötztal Alps & Stubai Alps
- Top Mountain Star: drinks and snacks at 3030 m
- Summit experience: 15 walking minutes from Wurmkogel
- Access by mountain gondola and chairlift (Tuesdays, Thursdays and Fridays)

### CONTACT

Liftgesellschaften Gurgl  
Gurglerstraße 93 | 6456 Obergurgl  
T +43 (0) 5256 6260  
bergbahnen@obergurgl.com

## Stone Pine Forest

„Gurgl's stone pine forest“ (1950 m - 2100 m) is an approx. 20 hectare big, secluded area with stone pine trees that are partly more than 300 years old. Alpine stone pines reaching such an old age represent a true rarity. Therefore, this „diamond“ within the rich jewelry box of Gurgl's landscape was declared a natural monument already in 1963. A 4.4 km long adventure theme trail leads through the stone pine forest.

### TOPICS

- Narrow-headed ants - small but clever
- Valley views - Gurgl then and now
- Natural monument stone pine forest - pearl of nature
- The stone pine is alive - tree of many talents
- Lichen details - survivor on the mountain
- Insight into the past - test your knowledge
- Hayek place of peace - clear air, free thoughts
- Knot-holes close up
- Insights into the stone pine tree - witness of the past
- Glacier vista point - the power of ice
- The nutcracker
- Piccard viewing spot
- The glacier brooklet - life near freezing point

## Timmelsjoch High Alpine Road & Top Mountain Motorcycle Museum

The pass road winds its way up to 2509 m altitude in more than 60 switch backing turns. Spectacular vantage spots, crystal-clear mountain brooks and steeply sloping rock faces are constant companions on your journey from Tirol's Ötztal to Italy's South Tyrol. Architectural sculptures spread along the route inform about nature, history, culture, society and economy of the region.

At the toll booth on the pass road, which is at the same time one of the most fabulous vantage points in the Ötztal Alps, Europe's highest motorcycle museum will enchant visitors. The breathtaking museum's architecture, more than 280 historic motorbikes and other rarities are presented on a 3000 m² exhibition area.

### FACTS

- North-south connection off the main traffic routes
- Traveling through several vegetation zones from Alpine meadows up to sparse high mountain landscapes
- Driving pleasure and great road turns
- Museum with a unique collection of classic motorcycles and automotive rarities
- Popular starting point for mountain tours and hikes

### CONTACT

Timmelsjoch Hochalpenstraßen AG  
Museumstraße 5 | 6020 Innsbruck | Austria  
T +43 (0) 512 5819 70  
info@timmelsjoch.com  
www.timmelsjoch.com

Mountain Motorcycle GmbH & CoKG  
Timmelsjochstrasse 8 | 6456 Hochgurgl | Austria  
T +43 (0) 5256 6265 910  
crosspoint@tophochgurgl.com  
www.crosspoint.tirol  
N 46.909261° E 11.053367°





# MICE

*In summer and winter alike, Bergbahnen Sölden not only take guests with state-of-the-art mountain lifts to the ski region and hiking paradise or the unique glacier world above Sölden, but also offer truly outstanding meeting locations and varied program options right on the mountain.*

## 1. GIGGIJOCH (2.284M)

- Located directly at the top station of Giggijoch Gondola
- 150 m<sup>2</sup> meeting room with about 80 seats
- Screen, sound system, internet and TV sets
- Also accessible without ski equipment
- Spacious gastronomic areas
- 2 sunny terraces

## 2. ICE Q (3.040M)

- Located directly at the top station of Gaislachkogel Gondola
- Premium location for 30 persons
- Screen, beamer, sound system, flipchart and WiFi
- Also accessible without ski equipment
- Exquisite gourmet cuisine and a glass of champagne on the deluxe panorama terrace

## 3. DAS CENTRAL – ALPINE . LUXURY . LIFE

- Deluxe meeting and exclusive presentation on 27 – 147 m<sup>2</sup>
- Lectern, stage, screen, beamer, WiFi, internet, TV, sound system & more
- 5-star catering at the highest level
- Luxurious work-life balance thanks to toque-awarded cuisine, luxury suites and varied sports and recreational facilities

## 4. BERGLAND DESIGN- & WELLNESSHOTEL

- Gipfelsuite - 60 m<sup>2</sup> fireplace room, exclusive meeting room
- Workshops coupled with sports, relaxation and fine culinary art
- Attentive and personal service
- Exclusive 150 m<sup>2</sup> meeting room for up to 80 persons
- Flipcharts & beamer, WiFi, presenter's set, screens

## 5. AQUA DOME – TIROL THERME LÄNGENFELD

- 11 top modern seminar rooms for up to 800 persons
- Daylight, WiFi and direct access to the garden
- Several gastronomic areas can be used variably
- Countless incentive options

## 6. RETTENBACH GLACIER (2.684M)

- Multifunctional 650 m<sup>2</sup> hall with complete infrastructure
- Screen, sound system, internet and TV sets
- In summer/autumn accessible via Glacier Road also without ski equipment
- In winter only accessible with ski equipment
- Complete catering infrastructure available for major events

## 7. TIEFENBACH GLACIER (2796M)

- 80 m<sup>2</sup> meeting room with about 50 seats
- Screen and beamer
- In summer/autumn accessible via Glacier Road also without ski equipment
- In winter only accessible with ski equipment
- Several gastronomic areas can be used variably

## 8. AREA 47

- Variable meeting room of up to 160 m<sup>2</sup>, with/without seating
- Screen, beamer, WiFi, internet, TV, flipchart, microphone, sound system
- Opening times depend on AREA 47 seasons
- Several gastronomic areas can be used variably

## 9. CONGRESS & EVENT CENTER GURGL

In Gurgl, the Diamond of the Alps, a top modern congress and event center is built in autumn 2019. The brand-new center equipped with state-of-the-art event technology accommodates up to 600 persons. A high level of flexibility offers the best conditions for ensuring maximum customer requirements due to the variety of hall configurations.

Gurgl's convention tradition goes back to the 1930s and since then interested customers from all over the world have been organizing successful congresses and events at the Diamond of the Alps. A unique feel-good atmosphere is guaranteed. Be inspired and gain new perspectives!



# Event Preview

**FIS SKI WORLD CUP OPENING**

October: Sölden is again in the center of attention, when the international Alpine skiing elite celebrates the official World Cup season opening at Rettenbach Glacier. Fans can see almost the entire race slope from the finish area.

**SKI OPENING IN GURGL**

November: Gurgl, the „Diamond of the Alps“, celebrates as one of the first ski areas the start into the new winter season: fun on the slopes, jovial hut parties and great specials.

**MY WINTER START**

December: The Hochoetz ski region kicks off the season with great offers. All skipasses are also valid in the ski resort of Kühtai.

**CROSS-COUNTRY SKIING FESTIVAL**

December - February: Free material tests & ski waxing station, taster biathlon for adults and children, free technique training courses and a varied children's program incl. skidoo for kids, face painting, snowball wall and Ötztal's largest snowman. Games, ultimate fun and action guaranteed!

**ON-MOUNTAIN NEW YEAR'S EVE**

December: Enjoy an exceptional turn of the year at 2000 meters above sea level! Welcome the new year with impressive fireworks display, fantastic views, dance, fun and entertaining highlights.

**MY KIDS SNOW FESTIVAL**

February & March: Winter-wonderful show with games, fun and entertainment for young and older visitors.

**ELECTRIC MOUNTAIN FESTIVAL**

April: And the party goes on ...! Top-class DJs and boisterous parties in a unique setting. With such a great mix the Hot Spot in the Alps attracts friends of electronic music. The Electric Mountain Festival brings the hottest artists of Electric Dance Music straight to Ötztal. The festival combines skiing fun and a party marathon in the middle of the Ötztal mountains. [www.electric-mountain-festival.com](http://www.electric-mountain-festival.com)

**OPEN FACES \*\*\*\*\*FREERIDE CONTEST**

March: The world's freeride elite once again stops in Upper Ötztal. The 4-star qualifier event for the Freeride World Tour will be held in Gurgl. The freeriders show their skills on the popular „Face“ of Hangerer mountain's northern slope while the spectators can comfortably watch them from the terrace of Hohe Mut Alm. [www.open-faces.com](http://www.open-faces.com)

**AUDI NINES**

April: The Audi Nines lays the foundation for breathtaking features, media production and action - for the years to come. [www.audinines.com](http://www.audinines.com)

**STUIBEN TRAIL RUN – UMHAUSEN-NIEDERTHAI**

May: Spectacular 728 natural and steel steps towards Tirol's biggest waterfall plus truly breathtaking mountain views - feel the elemental power of water at the 4th edition of the Stuiben Trail Run. [www.oetztal-trailrunning.at](http://www.oetztal-trailrunning.at)

**HOT DAYS GRILL & BARBECUE PARTY – SAUTENS**

June: „Tiroler Grillsportverein“ organizes the fifth edition of the Tirolean Barbecue Championship. [www.oetztal.com](http://www.oetztal.com)

**BIKE OPENING – BIKE REPUBLIC SÖLDEN**

June: MTB fans will experience highlights such as trial shows, bike technique workshops, opening of new tracks and cool after-bike parties. It will be a spectacular event thanks to highlights such as the legendary Paperchase with more than 500 participants or the Pump Track Contest. [www.bikerepublic.soelden.com](http://www.bikerepublic.soelden.com)

**GLACIER TRAIL RUN – GURGL**

July: The Challenge: technically demanding trails between 2000 and 3000 m. The ultimate chance: explore countless Ötztal glaciers close up. [www.obergurgl.com](http://www.obergurgl.com)

**NIVEA FAMILY FEST - OETZ**

July: The Nivea show stage with great stars stops again at the entrance to Ötztal. A 15-hour program provides entertainment for all the family. [www.nivea.at](http://www.nivea.at)

**ÖTZTAL GLACIER FLEA HIKING DAY – FROM GURGL TO VENT**

August: The high Alpine hiking tour leads from Gurgl (1930 m) via Ramoljoch ridge (3200 m) to Vent (1900 m). Afterwards it will be celebrated with pre-lunch music and entertainment in the finish area! [www.vent.at](http://www.vent.at)

**ÖTZTAL CLASSIC**

August: The already traditional „Ötztal Classic“ vintage car challenge starts its nostalgic tour in the context of Oetz's trade summer, offering a unique entertainment program. Village Grand Prix in the village center of Oetz. Drivers have to master 2 rounds including 4 special stages. A comprehensive show program is offered during the break. [www.oetztal-classic.at](http://www.oetztal-classic.at)

**4-LAKES HIKE – LÄNGENFELD**

August: The hiking event includes a very demanding but technically easy hike starting in Lehn near Längenfeld, leading past four magnificent, crystal-clear mountain lakes. [www.laengenfeld.com](http://www.laengenfeld.com)

**ÖTZTALER CYCLE MARATHON**

August: The mythic „Öztaler“. Every year some 4000 racing cyclists have a dream - to finish the most demanding cycle marathon of the Alps. The loop tour leads on 238 kilometers from Sölden over 4 Alpine passes (Kühtai, Brenner, Jaufen pass, Timmelsjoch) to South Tyrol and back again. The participants have to master incredible 5500 altitude meters, the fastest of them will reach the finish in a record time of just over seven hours. [www.oetztaler-radmarathon.com](http://www.oetztaler-radmarathon.com)

**HIKING THEATER: FRIEDL OF THE EMPTY POCKETS – VENT**

September: A small group of spectators goes on a historical „hike“ through the unspoilt landscape of Upper Ötztal together with the actors. While the actors in their historical costumes seem far away and then very close again, the dialogues are transmitted via radio ear buttons. [www.vent.at](http://www.vent.at)

**HAIMING MARKET DAYS – HAIMING**

October: Stroll, taste and enjoy - this is exactly what thousands of visitors are doing at Tirol's largest harvest market yearly held in autumn. Local products from regional farmers can be tasted and purchased directly from the producer. [www.haiminger-markttage.at](http://www.haiminger-markttage.at)



A complete list of events can be found at [oetztal.com/events-en](https://oetztal.com/events-en)








Ötztal.  
*Tirol at its Best.*

**ÖTZTAL TOURISMUS INCOMING GMBH**

Gemeindestraße 4 | 6450 Sölden | Austria | T +43 (0) 57200 256  
incoming@oetztal.com | [www.incoming.oetztal.com](http://www.incoming.oetztal.com)  
N 46.969572° E 11.010753°



 [www.oetztal.blog](http://www.oetztal.blog)

