



Weekly Events

Every Wednesday – 1-Day Snowshoe Hike*

When: Wednesday, 10.00 a.m.
Minimum number of participants: none
Cost: EUR 7 per person incl. snowshoes
Duration: approx. 3 hrs
Registration: Ötztal Tourismus, Haiming – Ochsegarten

Every Monday – Snowshoe Hike in the Evening*

When: Monday, 8.00 p.m.
Minimum number of participants: none
Cost: EUR 4 per person incl. snowshoes
Duration: approx. 2 hrs

Farmers' Market:

Every 1st Friday of the month (except January): Farmers' Market in Oetz, car park of Hotel 3 Mohren

*Registration: Ötztal Tourismus, Haiming – Ochsegarten, Oetz, Sautens by 12.00 p.m. of the previous day)

The present events calendar is available at the local tourist information offices. Subject to changes.

Hochoetz - Kühtai Ski Region

Enjoy twice the fun now. Experience skiing fun in the Kühtai ski area and on the slopes of Hochoetz. For all who aim high the following applies for the purchase of every multi-day ski pass this winter: **buy 1 ski pass and enjoy pure skiing pleasures in 2 ski areas.**

-> Powder snow on 78km of slopes
-> 23 lifts, perfectly groomed slopes

Plus free bus transfer between Hochoetz (Ochsegarten) and Kühtai (8km) every half hour. The pistes of the Hochoetz ski region have been awarded with the Tirolean Seal of Quality and are located on an altitude of 1,500m to 2,200m. From December onwards 35 state-of-the-art snow making facilities are in operation if necessary. The Kühtai sunshine, skiing and snowboarding paradise is Austria's highest-located ski resort. Skiing from an altitude of 2,020m with an impressive view of the Tirolean mountains.

Snow fun for the whole family in the Hochoetz and Kühtai ski regions: children are perfectly looked after at the ski schools, the fun park for children or at the kindergarten.

Romantic persons can visit an igloo village in Hochoetz and Kühtai at an altitude of more than 2,000m. If you like, you can stay: candle light, cuddly hides, sleeping bags, a warm-up room and a sauna make a stay in the high mountains a luxurious experience.

THE SUPER SKI PASS – UNLIMITED SKIING PLEASURES

The Super Ski Pass for Hochoetz, Kühtai, Niederthal and Sölden. 220 kilometres of perfectly groomed pistes and 60 state-of-the-art lifts can be used with one ski pass only!

3-day Super Ski Pass – choose freely between the Hochoetz, Kühtai and Niederthal ski areas. Sölden can only be chosen on one day. Adults: EUR 101 / Children (born between 1994 – 2003): EUR 52
The Super Ski Pass is also available as 6-day or 10-day ski pass!
More information can be taken from the lift association's folder.

REGIO BUS – REGULAR INTERVAL OPERATION

Skiers (with their alpine skiing equipment, cross-country skiers too) or holders of a valid ski pass enjoy free bus rides in the entire Ötztal valley and also to Kühtai. There are also village ski buses in Sautens and Oetz.

Non-skiers – guests with a valid guest card that are staying between Haiming and Oberurgl enjoy reduced rate tickets. For families with valid guest cards a cheap family ticket is available.

AQUA DOME – guests who want to visit Aqua Dome thermal spa pay the full fare for getting there, but enjoy a free ride back if they have their ticket stamped at Aqua Dome thermal spa.
Local and valley ski bus schedules are available at your tourist information offices.

Doctors and Pharmacies

GENERAL PRACTITIONERS

Dr. med. Erik Böck, Kaikofenstr. 15, 6425 Haiming, T +43 (0) 5266 88312
Dr. Frick, Wolfgang, Dorfstrasse 55, 6432 Sautens, T +43 (0) 5252 20102
Dr. Med. M. Larcher (in-house pharmacy), Dorfstr. 32, 6433 Oetz, T +43 (0) 5252 6314
Dr. med. Christian Hallbrucker (in-house pharmacy), Hauptstr. 53, 6433 Oetz, T +43 (0) 5252 20244

DENTISTS

DDr. Szilvia Heger/Dr. Maurice Heger, Kreuzstr. 17, 6425 Haiming, T +43 (0) 5266 88414
Dr. Schöpfl Rudolf, Bahnhofplatz 1, 6430 Ötztal-Bahnhof, T +43 (0) 5266 87142
Dr. Lorenz Volkmar, Ötztaler Höhe 11/II, 6430 Ötztal-Bahnhof, T +43 (0) 5266 87506 oder T +43 (0) 5262 64732

Dr. Med. R. Pöll, T +43 (0) 5252 6192
Dr. Med. Wagner, T +43 (0) 5252 2500

PHARMACIES

Edelweiß Apotheke Oetz, T +43 (0) 5252 20142
Alpenapotheke Silz, T +43 (0) 5263 6369
Simmeringapotheke Haiming, T +43 (0) 5263 6369

Important Numbers

Emergencies

Police Station, 6433 Oetz, Hauptstr. 3, T +43 (0)59 133 7106
Registration office for alpine accidents
Fire brigade 122 / Polizei 133 / Ambulance 144 / Mountain Rescue and Emergency 140 / European Emergency Number 112

Taxi

Förg Walter, Ötztal Bahnhof, T +43 (0) 664 8577050
Taxi Tipotsch, Ötztal Bahnhof, T +43 (0) 5266 88216
Taxi Ulli, Oetz, T +43 (0) 5252 6006
Baumann Peter, Habichen, T +43 (0) 5252 6249
Hechenberger Josef, Oetz, T +43 (0) 5252 6363
Parth Reisen, Sautens, T +43 (0) 5252 6237

Snow Phone: T +43 (0) 57200 703



Winter Hiking Trails

1) OCHSENGARTEN WINTER HIKING TRAIL

Starting Point: Ochsegarten elementary school -> on the left side of the valley towards Kühtai -> cross the federal road and Nedarbach brook after 1.5km -> return to Ochsegarten on the right side of the valley. **Alternative Starting Points:** next to the Balbach ski lift in Ochsegarten, opposite Gasthof Burkert or opposite Gasthof Waldesruh
Walking Time: approx. 1.5 hrs

2) OCHSENGARTEN LOOP TRAIL

Starting Point: Sattelle (1,690m) -> to Fedringalm pasture (is also a toboggan run) -> across Feldringalm grounds -> access to hiking trail to Marlstein, **Walking time:** approx. 4 hrs

3) FOREST TRAIL TO MARLSTEIN (not always cleared)

Starting Point: Sattelle (1,690m) -> first junction to the right towards Marlstein, **Walking Time:** approx. 1.5 hrs

4) HAIMING APPLE TRAIL

Starting Point: Haiming Information Office (670m) -> Magerbach along Apple Trail -> Silz. Back to Haiming past Pirchet Wald forest
Walking Time: approx. 2.5 hrs

5) HAIMING – SCHLIERENZAU – HAIMING

Starting Point: Haiming Information Office (670m) -> past Unterriedern to Riedern -> across the suspension bridge to Schlierenzau -> along Inntal cycle way back to Haiming
Walking Time: approx. 2.5 hrs

6) TOUR OF VILLAGES

Starting Point: Haiming, Ötztal Bahnhof, Sautens, Oetz, Tumpen
Explore our villages on easy and perfectly groomed winter hiking trails from Haiming to Sautens to Tumpen
Walking Time: approx. 5 hrs

7) DREI-KIRCHENBLICK LOOP TRAIL

Starting Point: Sautens information office -> past the church to Drei-Kirchenblick vantage point -> along the forestry trail to the end of the village of Sautens -> on the village road back to the centre
Walking Time: approx. 1 hr

8) SAUTENS – HADERLEHN – LAKE PIBURGER SEE

Starting Point: above the church of Sautens -> along the toboggan run (above school) -> road to Haderlehn to Ferienhof Haderlehn -> change to forestry trail. This trail continues to Piburg.
Walking Time: 1.5 hrs
Return to Oetz on Elsingerverg trail -> Beerweg trail -> Sautens or use the same route back.

9) MEDINGER LOOP TRAIL: SAUTENS – OETZ – SAUTENS

Starting Point: Sautens information office or Oetz, from there on Medinger trail to Oetz/Sautens and back to Sautens/Oetz on the other side of the river
Walking Time: approx. 1 hr

10) ELSINGER TRAIL – LAKE PIBURGER SEE – PIBURG

Starting Point: Oetz Information Office -> from the village centre across Piburg bridge -> take a left turn after approx. 100m -> along the wide forestry trail (Elsinger trail) up to Lake Piburger See -> along the left shore to the hamlet of Piburg, return to Oetz on the road
Walking Time: approx. 1.5 – 2 hrs

11) ELSINGER TRAIL – HABICHEN

Starting Point: Oetz Information Office -> from the village centre across Piburg bridge -> take a left turn after about 100m -> on the wide forestry trail (Elsinger trail) to Kohlstatt -> on the cycle way back to Habichen and Oetz
Walking Time: approx. 1 – 1.5 hrs

12) ANDREAS HOFER TRAIL

Starting Point: Oetz Information Office – along Ötztal Ache River into the valley to the junction, from where one has three alternatives:
a) take a left turn -> through the forest to the entrance of the village of Habichen -> back to Oetz. **Walking Time:** approx. 45min
b) continue straight to Wellerbrücke bridge -> through the forest to Habichen -> back to Oetz. **Walking Time:** approx. 1 hr
c) continue straight to Wellerbrücke bridge -> continue to Lake Piburger See and to Piburg (at the beginning the trail is somewhat steep) -> on the road to Oetz. **Walking Time:** approx. 2 hrs

13) HOCHOETZ – ROTES WANDL

Starting Point: Panoramarestaurant Hochoetz (2,020m) -> past the ski school for children -> follow the trail to "Rotes Wandl" vantage point, **Walking Time:** approx. 30min

Activities

AQUA DOME – TIROL THERME LÄNGENFELD

The Aqua Dome is Austria's most modern wellness world. On an area of about 50,000m² the elemental force of the warm thermal water blends with the impressive Ötztal mountains to a spa experience with a difference. The AQUA DOME wellness world is open daily from 9.00 a.m. to 11.00 p.m. (bathing stops at 10.30 p.m.). Some of our accommodation providers are partners of AQUA DOME thermal spa and are happy to assist you in coordinating and booking your required entrance tickets.

ICE SKATING

Haiming, Opening Times: as required, floodlit
Where: at the sports centre in Weisenrainstraße road

Ötztal Bahnhof, Opening Times: as required, floodlit

Where: at the back of the train station, next to the children playground

Oetz, Opening Times: 12.00 p.m. to 8.00 p.m., floodlit

Where: central car park of Oetz
Piburg, unserviced natural ice rink (entering at your own risk!)
Where: Lake Piburger See – natural ice rink

Rental of ice skates: Plattner shoe shop in Oetz, T +43 (0) 5252 6318

CURLING

Haiming, at the sports centre in Weisenrainstraße road
Sautens, asphalt alley – at the sports ground
Strigl Hermann, T +43 (0) 5252 6585

ROOM RIFLE SHOOTING

Sautens, every Wednesday, 8.00 p.m., Schützen meeting place, Prantl Heinz T +43 (0) 5252 6395
Oetz, every other Thursday, 8.00 p.m., Oetz Schützen association, T +43 (0) 664 4630626, more information at www.sg-oetz.at. Please book in advance.

HORSE-DRAWN CARRIAGE RIDES & RIDING

Oetz, Haflinger breed,
T+43 (0) 5252 6874 oder T +43 (0) 664 8398911 (carriage rides only)
Sautens, Parth Alfred, T +43 (0) 5252 20022 oder
Bernroither Helga, T+43 (0) 5252 2385

BOWLING ALLEY

Oetz, Tuesday – Saturday, 6.00 p.m. – 12.00 a.m., Grappa Oetz
Please book in advance, T +43 (0) 5252 20289 (from 4.00 p.m.)
Sautens, advance bookings possible for every day
Gasthof Bergland, T +43 (0) 5252 6538

TOBOGGAN RUNS

Sautens: floodlit, 1.5km-long toboggan run. **Walking Time:** 45 min
along a separate trail, toboggan rental at Winter World, no traffic

Piburg: floodlit daily, 1.2km-long toboggan run, perfect for families, **Walking Time:** 20 min on the toboggan run, rest stop and toboggan rental at Hotel Seerose T +43 (0) 5252 6220 and
Gasthof Piburgersee T +43 (0) 5252 6295, no traffic

Ochsegarten

2.2km-long toboggan run from Sattelle 1,690m, above Ochsegarten, to Feldringalm hut (serviced).
Walking Time: approx. 1 h, toboggan rental directly at Feldringalm hut, no traffic. Tip: only slightly ascending – perfect for families

Happy Family Weeks

from Jan 9 – 23, 2010 and Mar 13 – 27, 2010 and
from Jan 8 – 22, 2010 and Mar 12 – 26, 2011

Experience together with your family your personal winter holidays in the snow in Hochoetz in the Ötztal valley. Enjoy carefree winter days in a family-friendly ski area with personal care, tailored accommodations with an excellent price-value ratio.

Homey and quaint ski huts are perfect for enjoying a break. A pleasant atmosphere and snow pleasures off the beaten track ensure a nature experience with a difference. Snow guarantee from December to April! We are happy to tailor an individual and non-binding package with the following services for you.

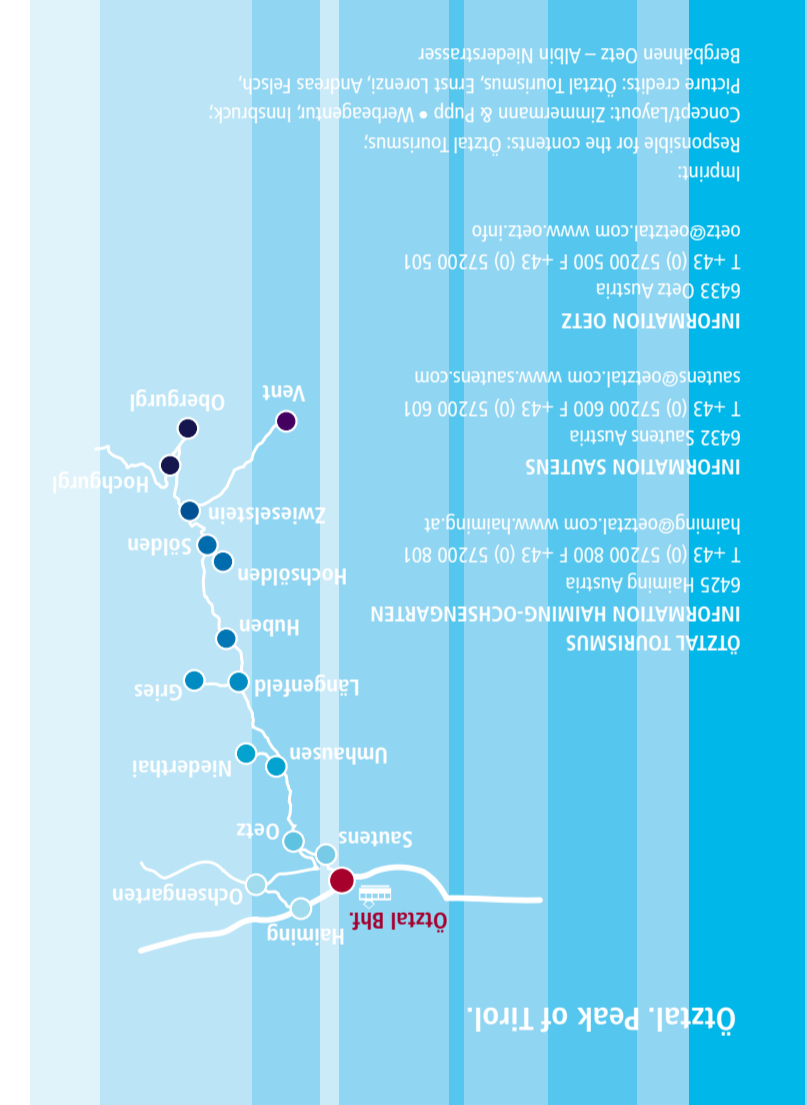
My Happy Family Package

-> nights in an accommodation of your chosen category (children born in 2004 or after are accommodated in the parents' room; separate rooms possible on request).
-> 5-day ski course for children or child care for children born in 2004 or after (children must be at least two years of age and toilet trained).
-> 5-day ski pass for children for the Hochoetz ski region for children born in 2004 or after.

Optionally

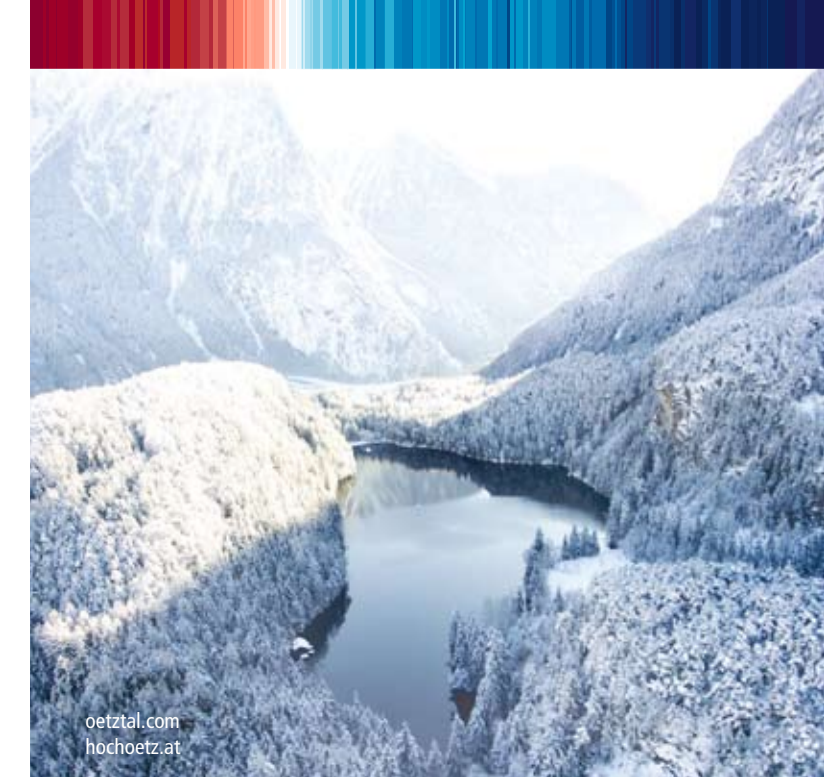
-> Ski pass for adults (for the Hochoetz and Kühtai ski areas)
-> Ski rental for adults
-> Ski rental for children and youths
-> Ski boot rental for adults
-> Ski boot rental for children and adults
-> Family day ticket for the Aqua Dome thermal spa

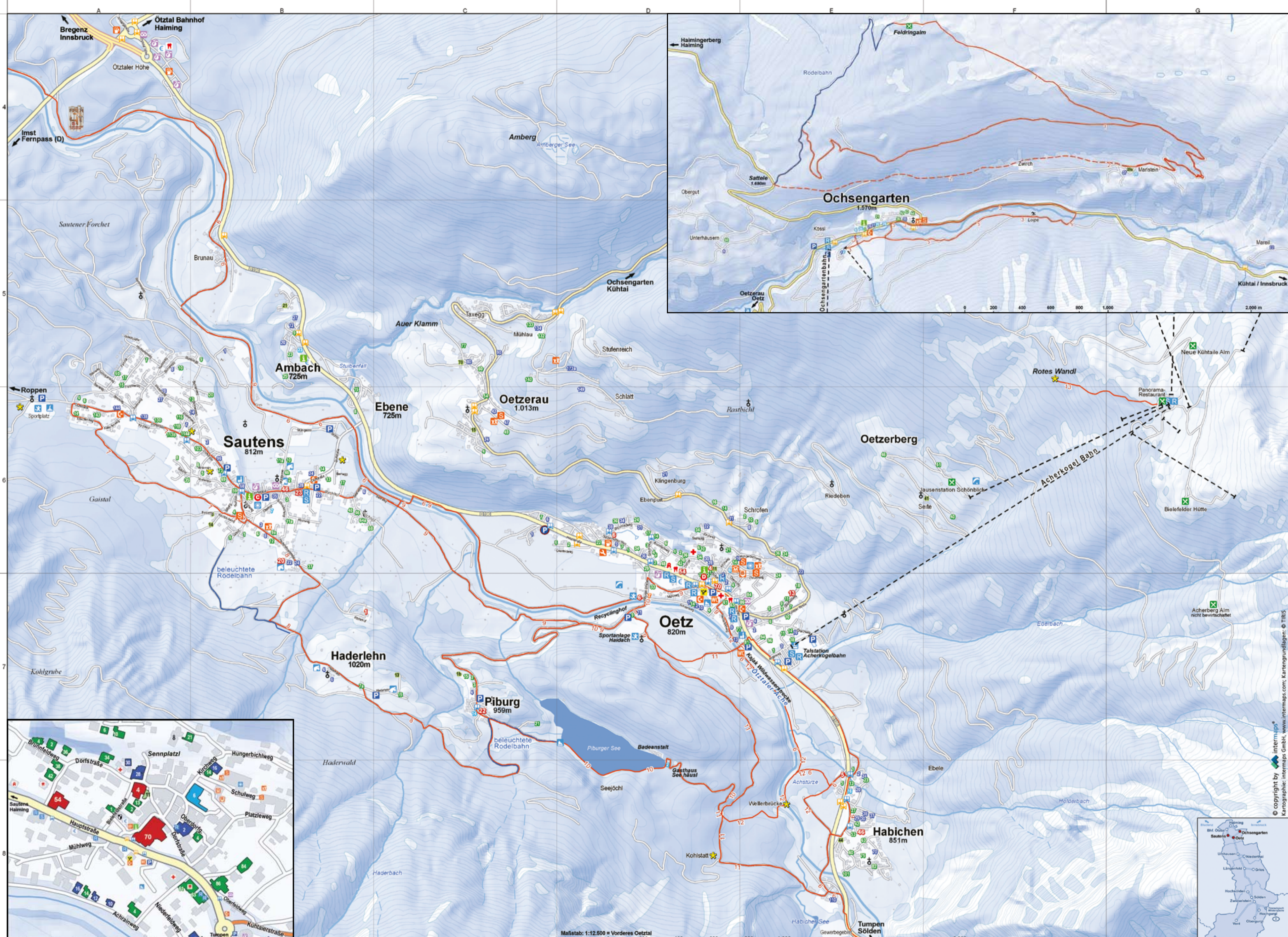
Rate for 2 adults and 1 child under 6 years		for 7 nights
Apartment from		€ 330
B&B guesthouse from		€ 434
3-star hotel from		€ 770
4-star hotel from		€ 1,100



Haiming-Ochsegarten Sautens Oetz

Resort Information Winter





- | | | | | | | | |
|---------------|---------------|-------------------|------------------------|----------------|-------------------------|---------------|---|
| Hotel | Hut | Mountain railways | Internet terminal | Ski school | Comfort station | Paragliding | Winter walk (not always cleared) |
| Hotel Garni | Pharmacy | Mountain guide | Church/chapel | Sight | Dentist | Horse riding | Nordic track |
| Inn | Doctor | Gastronomy | Food store/supermarket | Gas station | Ice Climbing | Archery | Doctor, administration, post office, bank/money, library, internet terminal |
| B&B | Bakery | Library | Museum | Phone box | Ice curling | Sports center | Administration, bank/money, tourist office, internet terminal |
| Holiday house | Train Station | Bus stop | Car park | Tourist office | Bowling | School | |
| Apartment | Bank/money | Administration | Police | Rental | Kindergarten/playground | Winter walk | |

Cross-Country Skiing Trails

OCHSENGARTEN CROSS-COUNTRY SKIING TRAIL
 Easy loop trail with a length of 3km.
 Classic style and skating can be pursued on this trail.
 The trail can be accessed at the Ochsen Garten elementary school (main access), opposite Gasthof Waldesruh and Gasthof Burkert, and next to the Balbach ski lift in Ochsen Garten.

NEARBY CROSS-COUNTRY SKIING TRAILS
 Niederthal high-altitude trail: 1,650m of altitude
 Tauferberg: 3km of classic trails, 3km of skating trails, difficult
 Hoarlachtal: 10km of classic trails, 10km of skating trails, intermediate difficulty
 Matau: 4km of classic trails, intermediate difficulty
 Sonnenplateau: 5km of classic trails, 5km of skating trails, easy
 Köfels high-altitude trail: 1,400m of altitude, 3km of classic trails, intermediate difficulty
 Stuibenthal: 1,039m of altitude, 8km of classic trails, 5km of skating trails, intermediate difficulty

Floodlit cross-country skiing trail in Umhausen
 Three times a week a section of the so-called Stuibenthal cross-country skiing trail in Umhausen (all difficulties) is floodlit in the evenings (5.00 p.m. – 10.00 p.m.). A perfect training and trial trail.

Snowshoe Hiking

On snowshoes nature gets a special dynamic for the observer.
 On snowshoe hikes through snow-covered landscapes, and secluded forests one can experience a truly fairytale-like landscape off the slopes and beaten tracks. A unique experience for every skier and non-skier.
 In the evenings we accompany you - equipped with head lamps - across a white carpet of peace and darkness. With every step you will hear the crunching of the snow crystals under your shoes, above the stars are shining. An exceptional experience for the whole family! At the following providers' you can book a snowshoe tour:

- OETZ**
 Oetz Ski School, Ski School Office at Acherkogelbahn base station, T and F +43 (0) 5252 6166
 Mali Ski School, T +43 (0) 5252 642730
 Snow and Fun Center in Hochoetz and office in Hauptstraße (next to Peto Bar), T +43 (0) 5252 60350 or +43 (0) 5252 20249
- SAUTENS**
 Winter World Ski School, village entrance – bus stop
 T +43 (0) 664 214040
- HAIMING/OCHSENGARTEN**
 Fritz Güfler Ski-Snowboard and Race School, Ochsen Gartenbahn base station, T +43 (0) 5252 6777

Ski Mountaineering Tours

The lower Ötztal valley offers plenty of classic ski mountaineering tours in a fantastic high mountain atmosphere. From beginners to pros, ski mountaineering enthusiasts of all ages frequent this area.

- ROUTE SUGGESTIONS**
 Pirchkogel (2,828m)
 Schatzölln (2,394m)
 Wetterkreuz (2,591m)
 Sulzkogel (3,016m)
 Further ski mountaineering route descriptions are available at the local tourist information offices!

Rental of Skiing and Sports Equipment

- OETZ**
 Intersport Fischer, Acherkogelbahn base and top terminal, T +43 (0) 5252 6166
 Lohmann Sport 2000, Hauptstr. 63, T +43 (0) 5252 20048 (at Mietski)
 Lohmann, Hauptstr. 45, T +43 (0) 5252 6578-17
 Mietski.com, Hauptstr. 63, T +43 (0) 664 8474642
 Outlet Oetz, Hauptstr. 49, T +43 (0) 5252 20178
 Snow Fun Center, Acherkogelbahn top terminal and Mali Center
 Hauptstraße 39, T +43 (0) 5252 20249 oder T +43 (0) 5252 60350
 Sporthaus Plattner, Dorfstr. 10, T +43 (0) 5252 6318, F +43 (0) 5252 6318-4

- SAUTENS**
 Winter World Ski School, entrance of the village – bus stop, T +43 (0) 664 214040
- HAIMING-OCHSENGARTEN**
 Fritz Güfler Ski-Snowboard-Race School, Ochsen Gartenbahn base station
 T +43 (0) 5252 6777

- SKI SCHOOLS**
 Oetz Ski School, ski school office at the Acherkogelbahn base station
 T + F +43 (0) 5252 6166
 Mali Ski School, T +43 (0) 5252 642730
 Winter World Ski School, entrance of the village of Sautens,
 T +43 (0) 664 214040
 Fritz Güfler Ski-Snowboard-Race School, Ochsen Gartenbahn base station,
 T +43 (0) 5252 6777



Worth Seeing

- TOUR OF A SHOW DISTILLERY INCL. SCHNAPPS TASTING**
 Learn about the secrets of schnapps distilling!
 Guided tour, tasting and selling on request:
 Gästehaus Michaela
 Hackl Werner & Edith Family, Hinterrain 5, 6432 Sautens
 T +43 (0) 5252 6850, ewhackl@aon.at, www.gaestehaus-michaela.at
 Gästehaus Edelweiss
 Hackl Family, Dorfstrasse 114, 6432 Sautens, T +43 (0) 5252 6393
 pens.edelweiss@aon.at, www.gaestehaus-edelweiss.at
 Hubert Wammes Family, 6425 Haiming, T +43 (0) 5266 88590
- OETZ TOWER MUSEUM**
 Schulweg 2, T +43 (0) 5252 20063
 Opening times: daily except Mondays, 2.00 p.m. – 6.00 p.m.,
 Name of the present exhibition at www.turmmuseum.at
 Guided tours: Sundays and public holidays at 3.00 p.m., Cafe in Museum

- HAIMING GRAIN MILL**
 Glatzl Organic Farm, Haiming, Tel +43 (0) 5266 88013
 Tours by prior arrangement only!
- BICYCLE AND MOTORBIKE EXHIBITION**
 Günther Raffl, T +43 (0) 5266 87161
 Viewing by prior arrangement only!

- FARM PRODUCE**
Glatzl Organic Farm
 Haiming, T +43 (0) 5266 88013
 Farm shop: western village entrance
 Friday from 2.00 p.m. – 6.00 p.m., Saturday from 8.00 a.m. – 12.00 p.m.
 At the farm: Monday – Thursday from 5.00 p.m. – 7.00 p.m.

- Griesserhof Farm**
 6333 Oetz, Hauptstraße 1
 T + 43 (0) 5252 6446
- Reaß'n Hof Farm**
 Peter und Roswitha Sonnweber, 6433 Oetz, Mühlweg 33
 T +43 (0) 5252 6284 (produce can be bought at the farm daily)

- Hubert and Sofie Prantl**, 6433 Oetz, Oetzerau 4, T +43 (0) 5252 6754
 Opening times: 8.00 a.m. – 10.00 a.m. and 5.00 p.m. – 7.30 p.m.
- SNOW VILLAGE IN HOCHOETZ**
 Igloo making workshops and overnights at an igloo at an altitude of 2,020m
 Possible from approx. mid-December to early April:
 Schneedorf GmbH
 Dorfstraße 7, 6432 Sautens
 T +43 (0) 5252 20157, www.schneedorf.com

- ÖTZTAL OUTDOOR COURSE – HIGH-ROPE COURSE**
 Experience fun and adventures in winter too!
 Daily on request, from mid-December to early April!
 Highlight: "Torchtlight Night Fly"
 Ötztaler Outdoorsports GmbH
 Dorfstraße 7, 6432 Sautens
 T +43 (0) 5252 20157, www.outdoor-parcours.com

